

NAYARIT

---RED FEDERAL LIBRE---

1	Crucero de San Blas - San Blas	MEX-015
2	Ent. Acaponeta - El Novillero	MEX-015
3	Ent. Santiago Ixcuintla - Playa Los Corchos	MEX-015
4	Guadalajara - Tepic	MEX-015
5	Libramiento de Tepic	MEX-015
6	Peñitas - Tuxpan	MEX-015
7	Ramal a Acaponeta	MEX-015
8	Ramal a Estación Nanchi	MEX-015
9	Ramal a Estación Ruíz	MEX-015
10	Ramal a La Laguna de Santa María	MEX-015
11	Ramal a Mecatán	MEX-015
12	Ramal a Nuevo Aeropuerto de Tepic	MEX-015
13	Ramal a Punta Mita	MEX-200
14	Ramal a Santa Cruz	MEX-015
15	San Blas - Santa Cruz	MEX-015
16	Tepic - Ixtapa de La Concepción	MEX-015
17	Tepic - Mazatlán	MEX-015
18	Tepic - Presa Aguamilpa	MEX-015
19	Tepic - Puerto Vallarta	MEX-200

---RED FEDERAL DE CUOTA---

20	Chapalilla - Compostela (Cuota)	MEX-068D
21	Guadalajara - Tepic (Cuota)	MEX-015D
22	Jala - Las Caleras (Cuota)	MEX-070D
23	Libramiento de Tepic (Cuota)	MEX-015D
24	Ramal a Tequepexpan	MEX-015D
25	Tepic - Puerto Vallarta (Cuota)	MEX-200D
26	Tepic - San Blas (Cuota)	MEX-D
27	Tepic - Villa Unión (cuota)	MEX-015D

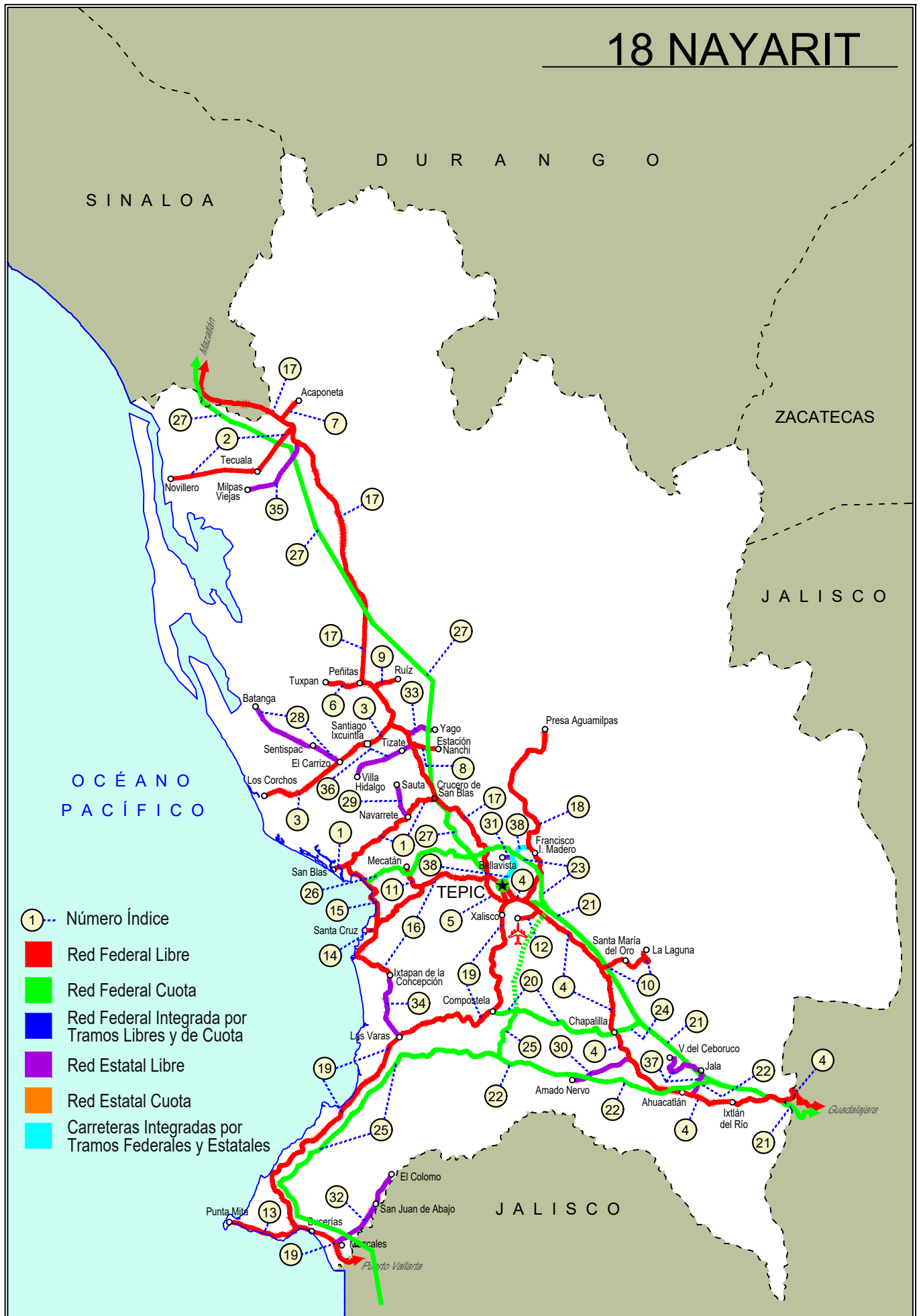
---RED ESTATAL LIBRE---

28	El Carrizo - La Batanga	NAY-078
29	Navarrete - Sauta	NAY-013
30	Ramal a Amado Nervo	NAY
31	Ramal a Bellavista	NAY-059
32	Ramal a El Colomo	NAY
33	Ramal a Estación Yago	NAY
34	Ramal a Ixtapa de La Concepción	NAY
35	Ramal a Milpas Viejas	NAY
36	Ramal a Villa Hidalgo	NAY
37	Ramal a Volcán del Ceboruco	NAY

---CARRETERAS INTEGRADAS POR TRAMOS FEDERALES Y ESTATALES---

38	Tepic - Francisco I. Madero	NAY-MEX-015
----	-----------------------------	-------------

18 NAYARIT



NAYARIT

1 CARR: Crucero de San Blas - San Blas

CLAVE: 18229

RUTA: MEX-015

AÑO: 2025

LUGAR	ESTACION				CLASIFICACION VEHICULAR EN PORCIENTO										COORDENADAS					
	KM	TE	SC	TDPA	M	A	B	C2	C3	T3S2	T3S3	T3S2R4	OTROS	A	B	C	K'	D	LATITUD	LONGITUD
T. C. Tepic - Mazatlán	0.00	3	0	2347	12.2	77.4	2.0	3.1	2.9	1.8	0.3	0.3	0.0	89.6	2.0	8.4	0.074	0.684	21.689682	-105.059876
Navarrete	11.00	3	0	2371	20.1	71.3	1.8	2.5	2.5	1.6	0.1	0.1	0.0	91.4	1.8	6.8	0.081	0.557	21.647085	-105.122492
San Blas	36.00	1	0	6229	11.7	76.3	1.0	7.8	1.1	0.9	0.6	0.5	0.1	88.0	1.0	11.0	0.122	0.509	21.544707	-105.269423

2 CARR: Ent. Acaponeta - El Novillero

CLAVE: 18023

RUTA: MEX-015

AÑO: 2025

LUGAR	ESTACION				CLASIFICACION VEHICULAR EN PORCIENTO										COORDENADAS					
	KM	TE	SC	TDPA	M	A	B	C2	C3	T3S2	T3S3	T3S2R4	OTROS	A	B	C	K'	D	LATITUD	LONGITUD
T. C. Tepic - Mazatlán	0.00	3	0	5492	13.9	76.6	2.3	3.9	1.5	1.0	0.4	0.4	0.0	90.5	2.3	7.2	0.077	0.518	22.486286	-105.385243
Tecuala	13.00	1	0	5640	14.6	77.5	2.3	2.3	1.5	0.7	0.5	0.4	0.2	92.1	2.3	5.6	0.084	0.574	22.425358	-105.439448
Tecuala	13.00	3	0	6369	27.1	69.9	0.4	1.2	0.6	0.4	0.1	0.2	0.1	97.0	0.4	2.6	0.096	0.589	22.399466	-105.486914
El Novillero	36.00	1	0	2241	25.9	71.4	0.4	1.3	0.9	0.1	0.0	0.0	0.0	97.3	0.4	2.3	0.088	0.726	22.382455	-105.659718

3 CARR: Ent. Santiago Ixcuintla - Playa Los Corchos

CLAVE: 18016

RUTA: MEX-015

AÑO: 2025

LUGAR	ESTACION				CLASIFICACION VEHICULAR EN PORCIENTO										COORDENADAS					
	KM	TE	SC	TDPA	M	A	B	C2	C3	T3S2	T3S3	T3S2R4	OTROS	A	B	C	K'	D	LATITUD	LONGITUD
T. C. Tepic - Mazatlán	0.00	3	1	3159	11.2	80.2	2.2	2.8	1.5	1.1	0.5	0.5	0.0	91.4	2.2	6.4	0.087	0.514	21.845747	-105.161252
T. C. Tepic - Mazatlán	0.00	3	2	2881	9.0	82.2	2.4	2.8	1.3	1.1	0.5	0.6	0.1	91.2	2.4	6.4	0.094	0.514	21.845685	-105.161213
Santiago Ixcuintla	8.00	1	1	3804	15.0	76.0	2.1	2.4	1.6	1.0	0.9	0.6	0.4	91.0	2.1	6.9	0.085	0.523	21.825827	-105.180041
Santiago Ixcuintla	8.00	1	2	3988	17.5	74.5	1.9	2.5	1.3	0.9	1.0	0.4	0.0	92.0	1.9	6.1	0.077	0.523	21.825767	-105.179996
Santiago Ixcuintla	8.00	3	0	9954	25.0	70.9	0.8	1.4	1.1	0.5	0.1	0.2	0.0	95.9	0.8	3.3	0.082	0.524	21.809057	-105.223054
T. Der. Mexcallitán	17.00	1	0	6314	23.2	72.6	0.9	1.5	0.9	0.4	0.1	0.4	0.0	95.8	0.9	3.3	0.080	0.547	21.773046	-105.271610
T. Der. Mexcallitán	17.00	3	0	4870	20.3	73.0	1.1	4.4	0.8	0.3	0.1	0.0	0.0	93.3	1.1	5.6	0.095	0.592	21.770361	-105.275321
Playa Los Corchos	39.00	1	0	1790	27.0	68.8	0.2	3.4	0.5	0.1	0.0	0.0	0.0	95.8	0.2	4.0	0.118	0.739	21.698533	-105.446356

4 CARR: Guadalajara - Tepic

CLAVE: 00031

RUTA: MEX-015

AÑO: 2025

LUGAR	ESTACION				CLASIFICACION VEHICULAR EN PORCIENTO										COORDENADAS					
	KM	TE	SC	TDPA	M	A	B	C2	C3	T3S2	T3S3	T3S2R4	OTROS	A	B	C	K'	D	LATITUD	LONGITUD
Guadalajara	0.00																			
T. Der. Base Aérea No. 2	8.30	3	1	46818	2.7	87.0	2.0	4.1	1.0	2.0	0.4	0.6	0.2	89.7	2.0	8.3	0.066	0.536	20.712858	-103.469622
T. Der. Base Aérea No. 2	8.30	3	2	43936	2.5	86.4	1.9	4.6	1.3	2.2	0.4	0.5	0.2	88.9	1.9	9.2	0.071	0.536	20.712761	-103.469772
T. Izq. La Primavera	20.50	1	1	29524	3.0	85.1	2.4	4.8	1.2	2.2	0.6	0.6	0.1	88.1	2.4	9.5	0.079	0.561	20.728132	-103.551874
T. Izq. La Primavera	20.50	1	2	29908	2.9	83.7	2.8	4.8	1.6	2.6	0.7	0.7	0.2	86.6	2.8	10.6	0.075	0.561	20.727991	-103.551889

NAYARIT

4 CARR: Guadalajara - Tepic

CLAVE: 00031

RUTA: MEX-015

AÑO: 2025

LUGAR	ESTACION				CLASIFICACION VEHICULAR EN PORCIENTO										COORDENADAS					
	KM	TE	SC	TDPA	M	A	B	C2	C3	T3S2	T3S3	T3S2R4	OTROS	A	B	C	K'	D	LATITUD	LONGITUD
T. C. Guadalajara - Tepic (Cuota)	22.75																			
El Arenal	36.20	1	1	8881	4.9	87.3	0.9	3.4	1.4	1.3	0.4	0.3	0.1	92.2	0.9	6.9	0.083	0.568	20.771992	-103.684423
El Arenal	36.20	1	2	8088	4.8	86.9	1.0	3.6	1.5	1.4	0.4	0.3	0.1	91.7	1.0	7.3	0.068	0.568	20.771870	-103.684413
Tequila	57.50	3	0	10922	9.9	78.9	1.4	4.8	1.7	1.5	0.6	0.5	0.7	88.8	1.4	9.8	0.077	0.509	20.896819	-103.836424
T. C. Ramal de Liga Aut. Guadalajara-Tepic	73.70	1	0	7985	9.3	81.5	1.3	4.1	1.6	1.6	0.4	0.2	0.0	90.8	1.3	7.9	0.100	0.692	20.907930	-103.953150
Magdalena	76.80	3	0	7425	9.8	78.0	1.3	6.5	1.4	1.3	0.4	0.6	0.7	87.8	1.3	10.9	0.073	0.551	20.922809	-103.996659
Lim. Edos. Term. Jal. Ppia. Nay.	123.09																			
Ixtlán del Río	138.84	1	0	4850	10.9	82.5	1.3	3.5	0.9	0.6	0.2	0.1	0.0	93.4	1.3	5.3	0.072	0.556	21.030798	-104.352678
Ixtlán del Río	138.84	3	0	11202	9.4	82.5	1.9	3.7	1.1	0.9	0.3	0.2	0.0	91.9	1.9	6.2	0.082	0.538	21.037195	-104.391833
Ahuacatlán	152.00	1	1	3762	6.3	81.3	2.5	4.5	2.2	2.2	0.8	0.1	0.1	87.6	2.5	9.9	0.086	0.505	21.053702	-104.474980
Ahuacatlán	152.00	1	2	4116	5.8	81.0	2.0	4.3	2.6	3.1	1.0	0.1	0.1	86.8	2.0	11.2	0.079	0.505	21.053624	-104.475044
Ahuacatlán	152.00	3	1	3331	9.1	77.4	2.6	3.4	2.3	3.1	1.4	0.6	0.1	86.5	2.6	10.9	0.087	0.547	21.058795	-104.493517
Ahuacatlán	152.00	3	2	3609	9.1	77.3	2.7	3.4	2.2	3.3	1.3	0.6	0.1	86.4	2.7	10.9	0.085	0.547	21.058687	-104.493544
X. C. Jala - Las Caleras (Cuota)	154.65	3	0	5473	7.3	74.9	3.1	5.0	3.1	4.3	1.7	0.5	0.1	82.2	3.1	14.7	0.082	0.507	21.061377	-104.517782
T. Izq. Amado Nervo	167.32	1	0	4924	4.9	82.0	2.6	3.7	1.6	3.6	1.3	0.2	0.1	86.9	2.6	10.5	0.079	0.528	21.128995	-104.601530
Tequepexpan	174.70																			
T. Izq. Compostela	175.50	1	0	6812	5.3	79.5	3.4	4.1	2.0	3.8	1.1	0.7	0.1	84.8	3.4	11.8	0.077	0.519	21.187054	-104.633353
T. Izq. Compostela	175.50	3	0	4142	4.2	76.6	3.5	5.1	3.4	4.8	1.4	0.9	0.1	80.8	3.5	15.7	0.087	0.565	21.197584	-104.645549
T. Der. Santa María del Oro	196.00	1	0	4596	3.6	84.3	1.9	2.6	2.5	3.3	1.0	0.7	0.1	87.9	1.9	10.2	0.086	0.522	21.324376	-104.669797
T. Der. Santa María del Oro	196.00	3	0	6814	3.9	79.4	1.8	5.2	3.2	4.6	1.3	0.5	0.1	83.3	1.8	14.9	0.090	0.549	21.330508	-104.673140
T. Izq. Aeropuerto de Tepic	215.68	1	0	12867	9.9	78.1	1.5	2.7	2.5	2.9	0.7	1.3	0.4	88.0	1.5	10.5	0.074	0.511	21.446650	-104.811343
San Cayetano	215.90	3	1	8557	5.1	85.9	1.0	1.9	2.6	1.6	0.7	1.0	0.2	91.0	1.0	8.0	0.085	0.535	21.457848	-104.824992
San Cayetano	215.90	3	2	8279	4.9	85.4	1.2	2.2	2.6	1.6	0.8	1.0	0.3	90.3	1.2	8.5	0.079	0.535	21.457799	-104.825046
T. Izq. Libramiento de Tepic (Lateral)	219.10	1	1	4437	17.8	71.8	1.6	3.3	2.8	1.4	0.5	0.5	0.3	89.6	1.6	8.8	0.092	0.517	21.467270	-104.839035
T. Izq. Libramiento de Tepic (Central)	219.10	1	1	13622	6.5	81.1	2.8	2.5	2.2	3.0	0.6	1.0	0.3	87.6	2.8	9.6	0.083	0.517	21.467184	-104.839002
T. Izq. Libramiento de Tepic (Lateral)	219.10	1	2	4573	17.6	72.1	1.7	3.1	2.7	1.6	0.6	0.4	0.2	89.7	1.7	8.6	0.093	0.517	21.467100	-104.839230
T. Izq. Libramiento de Tepic (Central)	219.10	1	2	14491	6.7	79.3	3.0	2.7	3.2	3.2	0.9	0.8	0.2	86.0	3.0	11.0	0.076	0.517	21.467180	-104.839196
T. Izq. Libramiento de Tepic	219.10	3	1	20958	8.5	82.3	1.9	2.8	1.6	1.3	0.3	1.1	0.2	90.8	1.9	7.3	0.078	0.507	21.470268	-104.847824
T. Izq. Libramiento de Tepic	219.10	3	2	21274	8.2	82.0	1.7	3.1	2.0	1.5	0.4	0.8	0.3	90.2	1.7	8.1	0.078	0.507	21.470180	-104.847872
Tepic (Central)	224.80	1	1	21163	6.1	81.9	1.3	4.4	1.1	2.0	1.8	1.2	0.2	88.0	1.3	10.7	0.084	0.537	21.472088	-104.853109
Tepic (Lateral)	224.80	1	1	9835	10.0	76.2	3.3	4.6	2.7	1.5	1.0	0.6	0.1	86.2	3.3	10.5	0.080	0.537	21.472176	-104.853049
Tepic (Lateral)	224.80	1	2	9344	10.2	76.2	3.0	4.9	2.5	1.2	1.4	0.4	0.2	86.4	3.0	10.6	0.091	0.537	21.472036	-104.853435
Tepic (Central)	224.80	1	2	21034	5.8	82.6	1.0	4.5	1.2	2.1	1.6	0.9	0.3	88.4	1.0	10.6	0.082	0.537	21.472119	-104.853399

NAYARIT

5 CARR: Libramiento de Tepic

CLAVE: 18232

RUTA: MEX-015

AÑO: 2025

LUGAR	ESTACION				CLASIFICACION VEHICULAR EN PORCIENTO													COORDENADAS			
	KM	TE	SC	TDPA	M	A	B	C2	C3	T3S2	T3S3	T3S2R4	OTROS	A	B	C	K'	D	LATITUD	LONGITUD	
T. C. Guadalajara - Tepic	0.00																				
X. C. Tepic - Puerto Vallarta	5.00	1	1	30491	6.5	86.2	1.5	1.9	1.3	1.8	0.4	0.3	0.1	92.7	1.5	5.8	0.083	0.515	21.469696	-104.886730	
X. C. Tepic - Puerto Vallarta	5.00	1	2	28929	6.4	86.5	1.2	1.6	1.5	2.0	0.5	0.2	0.1	92.9	1.2	5.9	0.084	0.515	21.468518	-104.885597	
T. C. Tepic - Mazatlán	12.40	1	1	16717	6.6	81.5	2.5	2.3	2.4	2.9	0.7	1.0	0.1	88.1	2.5	9.4	0.079	0.505	21.517449	-104.924989	
T. C. Tepic - Mazatlán	12.40	1	2	15667	6.8	81.9	2.7	2.4	1.9	2.2	0.7	1.2	0.2	88.7	2.7	8.6	0.086	0.505	21.517806	-104.925302	

6 CARR: Peñitas - Tuxpan

CLAVE: 18019

RUTA: MEX-015

AÑO: 2025

LUGAR	ESTACION				CLASIFICACION VEHICULAR EN PORCIENTO													COORDENADAS		
	KM	TE	SC	TDPA	M	A	B	C2	C3	T3S2	T3S3	T3S2R4	OTROS	A	B	C	K'	D	LATITUD	LONGITUD
Peñitas	0.00	3	0	6746	21.1	71.7	1.1	2.6	2.5	0.4	0.3	0.3	0.0	92.8	1.1	6.1	0.078	0.563	21.941932	-105.228203
Tuxpan	9.00	1	0	8469	25.9	70.6	0.6	1.1	1.3	0.2	0.1	0.2	0.0	96.5	0.6	2.9	0.082	0.544	21.942090	-105.280772

7 CARR: Ramal a Acaponeta

CLAVE: 18038

RUTA: MEX-015

AÑO: 2025

LUGAR	ESTACION				CLASIFICACION VEHICULAR EN PORCIENTO													COORDENADAS		
	KM	TE	SC	TDPA	M	A	B	C2	C3	T3S2	T3S3	T3S2R4	OTROS	A	B	C	K'	D	LATITUD	LONGITUD
T. C. Tepic - Mazatlán	0.00	3	1	6394	19.9	69.7	1.9	6.3	0.8	0.5	0.5	0.4	0.0	89.6	1.9	8.5	0.091	0.546	22.489490	-105.380730
T. C. Tepic - Mazatlán	0.00	3	2	6519	19.9	69.9	1.8	6.2	0.7	0.6	0.5	0.3	0.1	89.8	1.8	8.4	0.091	0.546	22.489638	-105.380804
Acaponeta	3.00																			

8 CARR: Ramal a Estación Nanchi

CLAVE: 18068

RUTA: MEX-015

AÑO: 2025

LUGAR	ESTACION				CLASIFICACION VEHICULAR EN PORCIENTO													COORDENADAS		
	KM	TE	SC	TDPA	M	A	B	C2	C3	T3S2	T3S3	T3S2R4	OTROS	A	B	C	K'	D	LATITUD	LONGITUD
T. C. Tepic - Mazatlán	0.00	3	0	1135	30.1	67.0	0.4	1.0	1.2	0.2	0.0	0.1	0.0	97.1	0.4	2.5	0.114	0.550	21.810430	-105.098348
Estación Nanchi	5.00																			

9 CARR: Ramal a Estación Ruiz

CLAVE: 18026

RUTA: MEX-015

AÑO: 2025

LUGAR	ESTACION				CLASIFICACION VEHICULAR EN PORCIENTO													COORDENADAS		
	KM	TE	SC	TDPA	M	A	B	C2	C3	T3S2	T3S3	T3S2R4	OTROS	A	B	C	K'	D	LATITUD	LONGITUD
T. C. Tepic - Mazatlán	0.00	3	0	5156	16.2	77.9	0.7	2.3	2.2	0.4	0.1	0.2	0.0	94.1	0.7	5.2	0.085	0.537	21.935301	-105.190090
Estación Ruiz	5.50	1	0	6299	25.7	67.4	1.0	2.2	2.1	0.7	0.5	0.3	0.1	93.1	1.0	5.9	0.076	0.508	21.943185	-105.165262

NAYARIT

10 CARR: Ramal a La Laguna de Santa María

CLAVE: 18005

RUTA: MEX-015

AÑO: 2025

LUGAR	ESTACION				CLASIFICACION VEHICULAR EN PORCIENTO										COORDENADAS					
	KM	TE	SC	TDPA	M	A	B	C2	C3	T3S2	T3S3	T3S2R4	OTROS	A	B	C	K'	D	LATITUD	LONGITUD
T. C. Guadalajara - Tepic	0.00	3	0	3986	4.0	87.4	1.7	2.6	1.8	1.3	0.7	0.3	0.2	91.4	1.7	6.9	0.081	0.514	21.326910	-104.668635
Santa María del Oro	11.50	1	1	2278	13.7	80.3	0.8	2.7	1.4	0.5	0.1	0.3	0.2	94.0	0.8	5.2	0.093	0.676	21.325864	-104.595987
Santa María del Oro	11.50	1	2	2309	13.6	80.3	1.0	2.2	1.5	0.6	0.1	0.4	0.3	93.9	1.0	5.1	0.122	0.676	21.325927	-104.596011
Laguna de Santa María	20.00	1	0	1070	18.2	74.8	0.9	4.9	0.9	0.2	0.0	0.1	0.0	93.0	0.9	6.1	0.205	0.881	21.357714	-104.571346

11 CARR: Ramal a Mecatán

CLAVE: 18010

RUTA: MEX-015

AÑO: 2025

LUGAR	ESTACION				CLASIFICACION VEHICULAR EN PORCIENTO										COORDENADAS					
	KM	TE	SC	TDPA	M	A	B	C2	C3	T3S2	T3S3	T3S2R4	OTROS	A	B	C	K'	D	LATITUD	LONGITUD
T. C. (Tepic - Mazatlán) - Ixtapan de La Concepción	0.00	3	0	1381	7.9	89.3	0.2	0.1	1.4	0.9	0.1	0.1	0.0	97.2	0.2	2.6	0.068	0.511	21.500235	-105.084756
Mecatán	9.00																			

12 CARR: Ramal a Nuevo Aeropuerto de Tepic

CLAVE: 18012

RUTA: MEX-015

AÑO: 2025

LUGAR	ESTACION				CLASIFICACION VEHICULAR EN PORCIENTO										COORDENADAS					
	KM	TE	SC	TDPA	M	A	B	C2	C3	T3S2	T3S3	T3S2R4	OTROS	A	B	C	K'	D	LATITUD	LONGITUD
T. C. Guadalajara - Tepic	0.00	3	0	5118	11.2	79.3	0.8	1.6	5.2	0.8	0.4	0.5	0.2	90.5	0.8	8.7	0.092	0.556	21.444534	-104.820140
Aeropuerto de Tepic	5.00																			

13 CARR: Ramal a Punta Mita

CLAVE: 18020

RUTA: MEX-200

AÑO: 2025

LUGAR	ESTACION				CLASIFICACION VEHICULAR EN PORCIENTO										COORDENADAS					
	KM	TE	SC	TDPA	M	A	B	C2	C3	T3S2	T3S3	T3S2R4	OTROS	A	B	C	K'	D	LATITUD	LONGITUD
T. C. Tepic - Puerto Vallarta	0.00	3	0	22213	8.2	84.0	0.8	4.3	1.3	0.5	0.5	0.3	0.1	92.2	0.8	7.0	0.069	0.512	20.754630	-105.378760
San Ignacio	9.00	3	0	10921	6.2	80.0	3.0	8.3	1.3	0.5	0.4	0.2	0.1	86.2	3.0	10.8	0.097	0.527	20.756790	-105.456605
Punta Mita	18.00																			

14 CARR: Ramal a Santa Cruz

CLAVE: 18030

RUTA: MEX-015

AÑO: 2025

LUGAR	ESTACION				CLASIFICACION VEHICULAR EN PORCIENTO										COORDENADAS					
	KM	TE	SC	TDPA	M	A	B	C2	C3	T3S2	T3S3	T3S2R4	OTROS	A	B	C	K'	D	LATITUD	LONGITUD
T. C. Tepic - Ixtapan de La Concepción	0.00																			
Santa Cruz	1.30	1	0	4326	32.8	65.4	0.2	0.8	0.4	0.1	0.1	0.1	0.1	98.2	0.2	1.6	0.072	0.526	21.433243	-105.190608

NAYARIT

15 CARR: San Blas - Santa Cruz

CLAVE: 18230

RUTA: MEX-015

AÑO: 2025

LUGAR	ESTACION				CLASIFICACION VEHICULAR EN PORCIENTO										COORDENADAS					
	KM	TE	SC	TDPA	M	A	B	C2	C3	T3S2	T3S3	T3S2R4	OTROS	A	B	C	K'	D	LATITUD	LONGITUD
T. C. Crucero San Blas - San Blas	0.00	3	0	7189	23.3	73.2	0.5	1.6	0.6	0.5	0.1	0.2	0.0	96.5	0.5	3.0	0.108	0.538	21.537452	-105.249238
Aticama	12.00	1	0	5829	32.0	62.4	0.9	1.4	0.9	0.9	0.4	0.9	0.2	94.4	0.9	4.7	0.167	0.513	21.487607	-105.191590
Playa Los Cocos	15.20	3	0	5289	17.2	78.0	0.7	1.7	1.1	0.9	0.2	0.2	0.0	95.2	0.7	4.1	0.094	0.551	21.462305	-105.187830
Santa Cruz	19.19	1	0	4697	11.7	72.6	2.0	5.3	4.4	1.9	1.2	0.9	0.0	84.3	2.0	13.7	0.088	0.540	21.436015	-105.186726

16 CARR: Tepic - Ixtapa de La Concepción

CLAVE: 18028

RUTA: MEX-015

AÑO: 2025

LUGAR	ESTACION				CLASIFICACION VEHICULAR EN PORCIENTO										COORDENADAS					
	KM	TE	SC	TDPA	M	A	B	C2	C3	T3S2	T3S3	T3S2R4	OTROS	A	B	C	K'	D	LATITUD	LONGITUD
T. C. Tepic - Mazatlán	0.00	3	0	14337	9.2	81.3	2.0	6.1	0.6	0.3	0.2	0.3	0.0	90.5	2.0	7.5	0.079	0.657	21.518890	-104.937573
T. Der. Mecatán	19.00	1	0	1703	10.0	86.2	0.8	1.6	0.9	0.3	0.1	0.1	0.0	96.2	0.8	3.0	0.101	0.814	21.501007	-105.081557
T. Der. Mecatán	19.00	3	0	2789	10.8	82.7	1.2	3.2	1.9	0.2	0.0	0.0	0.0	93.5	1.2	5.3	0.111	0.754	21.497720	-105.082863
Jalcocotán	27.00	1	0	3450	17.6	79.0	0.6	1.6	0.8	0.2	0.1	0.1	0.0	96.6	0.6	2.8	0.078	0.667	21.484152	-105.090271
T. Der. Santa Cruz	50.00	3	0	4345	27.7	67.5	1.1	1.5	0.9	1.2	0.1	0.0	0.0	95.2	1.1	3.7	0.080	0.530	21.423454	-105.183673
Ixtapan de La Concepción	77.42	1	0	2473	15.7	78.4	1.5	1.6	1.2	1.5	0.1	0.0	0.0	94.1	1.5	4.4	0.089	0.750	21.312989	-105.155122

17 CARR: Tepic - Mazatlán

CLAVE: 00499

RUTA: MEX-015

AÑO: 2025

LUGAR	ESTACION				CLASIFICACION VEHICULAR EN PORCIENTO										COORDENADAS					
	KM	TE	SC	TDPA	M	A	B	C2	C3	T3S2	T3S3	T3S2R4	OTROS	A	B	C	K'	D	LATITUD	LONGITUD
Tepic (Alta)	0.00	3	1	11417	6.2	87.2	0.5	3.4	1.2	0.8	0.3	0.3	0.1	93.4	0.5	6.1	0.075	0.517	21.511908	-104.905865
Tepic (Baja)	0.00	3	1	8480	7.5	86.0	0.6	3.9	1.5	0.1	0.2	0.1	0.1	93.5	0.6	5.9	0.078	0.517	21.511966	-104.905765
Tepic (Baja)	0.00	3	2	8631	7.5	86.6	0.5	3.3	1.5	0.1	0.3	0.1	0.1	94.1	0.5	5.4	0.076	0.517	21.511764	-104.905938
Tepic (Alta)	0.00	3	2	12514	6.0	87.7	0.5	3.0	1.2	0.8	0.3	0.4	0.1	93.7	0.5	5.8	0.077	0.517	21.511856	-104.905898
T. Izq. Libramiento de Tepic (Baja)	2.56	1	1	9882	10.6	83.8	0.5	3.0	1.6	0.2	0.2	0.1	0.0	94.4	0.5	5.1	0.077	0.516	21.521483	-104.922673
T. Izq. Libramiento de Tepic (Alta)	2.56	1	1	9470	2.9	95.4	0.1	0.9	0.3	0.1	0.1	0.2	0.0	98.3	0.1	1.6	0.083	0.516	21.521393	-104.922710
T. Izq. Libramiento de Tepic (Baja)	2.56	1	2	8778	10.5	84.6	0.3	2.9	1.1	0.3	0.1	0.2	0.0	95.1	0.3	4.6	0.080	0.516	21.521268	-104.922823
T. Izq. Libramiento de Tepic (Alta)	2.56	1	2	10431	3.6	95.1	0.1	0.4	0.4	0.2	0.1	0.1	0.0	98.7	0.1	1.2	0.079	0.516	21.521354	-104.922778
T. Izq. Aut. Tepic-Villa Unión (Cuota)	3.70	3	0	7192	6.6	80.0	2.2	3.1	1.9	4.3	1.2	0.6	0.1	86.6	2.2	11.2	0.081	0.752	21.536142	-104.932400
Los Otates	19.80	3	0	5093	2.8	73.7	4.9	6.8	2.9	5.5	1.7	1.5	0.2	76.5	4.9	18.6	0.083	0.703	21.641805	-104.973264
T. Izq. Jumatán	28.52	1	0	4209	3.7	77.1	2.4	3.5	3.6	6.7	2.2	0.7	0.1	80.8	2.4	16.8	0.067	0.669	21.669833	-105.023809
T. Izq. Jumatán	28.52	3	1	7457	6.0	71.2	3.9	3.8	2.4	7.4	1.3	3.3	0.7	77.2	3.9	18.9	0.082	0.573	21.667956	-105.030477
T. Izq. Jumatán	28.52	3	2	8101	6.2	70.3	3.9	4.1	2.7	7.4	1.1	3.4	0.9	76.5	3.9	19.6	0.078	0.573	21.667966	-105.029645
T. Izq. San Blas	33.54	1	1	8295	4.5	75.1	2.8	3.1	1.8	9.1	0.6	2.6	0.4	79.6	2.8	17.6	0.093	0.609	21.679328	-105.042458
T. Izq. San Blas	33.54	1	2	7316	4.3	75.0	3.0	3.3	1.6	8.5	1.0	3.0	0.3	79.3	3.0	17.7	0.078	0.609	21.679397	-105.042891

NAYARIT

17 CARR: Tepic - Mazatlán

CLAVE: 00499

RUTA: MEX-015

AÑO: 2025

LUGAR	ESTACION				CLASIFICACION VEHICULAR EN PORCIENTO													COORDENADAS		
	KM	TE	SC	TDPA	M	A	B	C2	C3	T3S2	T3S3	T3S2R4	OTROS	A	B	C	K'	D	LATITUD	LONGITUD
T. Izq. San Blas	33.54	3	1	7421	3.0	67.0	5.8	3.7	2.8	12.4	1.6	3.0	0.7	70.0	5.8	24.2	0.092	0.537	21.704586	-105.055298
T. Izq. San Blas	33.54	3	2	7065	2.7	68.8	5.5	1.3	2.5	13.5	2.2	3.0	0.5	71.5	5.5	23.0	0.081	0.537	21.704537	-105.055420
T. Izq. Villa Hidalgo	48.12	1	0	9615	6.4	72.5	2.9	3.4	3.9	8.2	1.7	0.4	0.6	78.9	2.9	18.2	0.086	0.640	21.806574	-105.102537
T. Izq. Villa Hidalgo	48.12	3	0	7704	6.7	71.9	5.4	3.9	2.3	7.3	2.3	0.1	0.1	78.6	5.4	16.0	0.083	0.544	21.811914	-105.107308
T. Izq. Santiago Ixcuintla	56.42	1	0	8048	5.2	73.8	5.0	3.3	3.0	7.2	1.9	0.5	0.1	79.0	5.0	16.0	0.083	0.558	21.853109	-105.151156
T. Izq. Santiago Ixcuintla	56.42	3	0	7503	4.0	76.7	4.2	3.6	2.7	6.9	1.5	0.4	0.0	80.7	4.2	15.1	0.076	0.536	21.859148	-105.155991
T. Izq. Tuxpan	70.60	1	0	8659	5.0	76.8	3.7	3.3	2.7	6.0	1.5	0.6	0.4	81.8	3.7	14.5	0.073	0.540	21.944208	-105.215499
T. Izq. Tuxpan	70.60	3	0	7397	9.3	69.1	4.3	3.4	4.1	7.3	1.8	0.6	0.1	78.4	4.3	17.3	0.074	0.566	21.962163	-105.221691
T. Der. Rosamorada	90.70	3	0	6338	6.9	56.8	6.3	8.9	4.1	13.1	3.2	0.4	0.3	63.7	6.3	30.0	0.067	0.531	22.128937	-105.221231
Tierra Generosa	110.40	1	0	2984	8.1	53.2	6.6	7.6	4.3	12.4	4.2	2.8	0.8	61.3	6.6	32.1	0.071	0.596	22.293514	-105.272928
T. Der. Acaponeta	136.52	1	0	8373	10.0	68.0	4.5	3.1	2.6	8.9	2.4	0.3	0.2	78.0	4.5	17.5	0.078	0.547	22.483402	-105.384323
T. Der. Acaponeta	136.52	3	0	5894	10.4	63.3	5.1	4.1	3.7	9.1	3.2	0.8	0.3	73.7	5.1	21.2	0.070	0.540	22.492611	-105.384004
Lim. Edos. Term. Nay. Ppia. Sin.	144.60																			
T. Der. Villa Unión (Cuota)	193.60	1	1	4213	6.3	47.9	9.0	5.3	2.6	20.9	3.4	3.6	1.0	54.2	9.0	36.8	0.069	0.534	22.802205	-105.717344
T. Der. Villa Unión (Cuota)	193.60	1	2	4424	6.1	48.5	9.4	4.9	2.1	21.0	3.3	3.8	0.9	54.6	9.4	36.0	0.072	0.534	22.802113	-105.717420
Escuinapa de Hidalgo	200.00	1	0	4833	13.0	64.0	4.2	4.1	3.2	8.4	2.4	0.6	0.1	77.0	4.2	18.8	0.073	0.520	22.832576	-105.760532
Escuinapa de Hidalgo	200.00	3	0	6036	6.9	69.6	6.6	3.8	2.3	8.3	2.1	0.2	0.2	76.5	6.6	16.9	0.079	0.520	22.846987	-105.792000
Rosario	221.71	1	0	11330	15.8	69.9	3.5	2.3	2.2	4.6	1.6	0.1	0.0	85.7	3.5	10.8	0.075	0.501	22.997037	-105.851675
Rosario	221.71	3	0	7040	7.9	73.7	3.4	3.5	2.1	6.8	1.7	0.7	0.2	81.6	3.4	15.0	0.079	0.528	23.003186	-105.868461
X. C. Durango - Mazatlán (Cuota)	265.20	1	0	5215	4.5	74.3	3.6	4.0	2.5	7.5	2.8	0.6	0.2	78.8	3.6	17.6	0.077	0.544	23.189952	-106.174237
T. Der. Durango	267.99	1	0	7391	6.6	73.4	3.3	4.4	2.7	6.7	2.2	0.5	0.2	80.0	3.3	16.7	0.076	0.729	23.189403	-106.204992
T. Der. Durango	267.99	3	1	10006	8.7	75.8	3.9	3.1	2.3	3.6	0.8	1.5	0.3	84.5	3.9	11.6	0.078	0.513	23.189299	-106.210372
T. Der. Durango	267.99	3	2	10154	8.6	75.5	4.0	3.0	2.2	3.7	0.9	1.7	0.4	84.1	4.0	11.9	0.074	0.513	23.189184	-106.210367
Villa Unión	269.52	3	1	11748	8.8	79.1	3.5	2.7	1.9	2.5	0.6	0.7	0.2	87.9	3.5	8.6	0.073	0.592	23.190443	-106.222362
Villa Unión	269.52	3	2	12763	8.7	79.1	3.4	2.8	1.8	2.5	0.7	0.8	0.2	87.8	3.4	8.8	0.081	0.592	23.190322	-106.222418
T. Der. Libramiento de Mazatlán	288.87	1	1	24245	6.5	84.2	1.3	3.3	1.9	1.4	0.7	0.5	0.2	90.7	1.3	8.0	0.081	0.541	23.225198	-106.383047
T. Der. Libramiento de Mazatlán	288.87	1	2	24846	6.7	83.9	1.3	3.2	1.8	1.5	0.8	0.6	0.2	90.6	1.3	8.1	0.082	0.541	23.225141	-106.383103
Mazatlán	292.00																			

18 CARR: Tepic - Presa Aguamilpa

CLAVE: 18029

RUTA: MEX-015

AÑO: 2025

LUGAR	ESTACION				CLASIFICACION VEHICULAR EN PORCIENTO													COORDENADAS		
	KM	TE	SC	TDPA	M	A	B	C2	C3	T3S2	T3S3	T3S2R4	OTROS	A	B	C	K'	D	LATITUD	LONGITUD
T. C. Guadalajara - Tepic	0.00	3	1	18711	13.4	77.1	0.9	2.9	2.0	1.5	0.4	1.2	0.6	90.5	0.9	8.6	0.084	0.599	21.473796	-104.848214
T. C. Guadalajara - Tepic	0.00	3	2	16929	13.3	76.8	1.1	3.0	1.9	1.3	0.5	1.4	0.7	90.1	1.1	8.8	0.076	0.599	21.473831	-104.848317

NAYARIT

18 CARR: Tepic - Presa Aguamilpa

CLAVE: 18029

RUTA: MEX-015

AÑO: 2025

LUGAR	ESTACION				CLASIFICACION VEHICULAR EN PORCIENTO													COORDENADAS		
	KM	TE	SC	TDPA	M	A	B	C2	C3	T3S2	T3S3	T3S2R4	OTROS	A	B	C	K'	D	LATITUD	LONGITUD
X. C. Tepic - Fco. I. Madero	17.50	3	0	1974	18.4	76.7	0.4	2.3	1.9	0.2	0.0	0.1	0.0	95.1	0.4	4.5	0.118	0.780	21.594079	-104.842076
Presa Aguamilpa	54.00	1	0	399	16.6	80.2	0.5	2.1	0.2	0.2	0.1	0.1	0.0	96.8	0.5	2.7	0.155	0.710	21.812881	-104.836346

19 CARR: Tepic - Puerto Vallarta

CLAVE: 00068

RUTA: MEX-200

AÑO: 2025

LUGAR	ESTACION				CLASIFICACION VEHICULAR EN PORCIENTO													COORDENADAS		
	KM	TE	SC	TDPA	M	A	B	C2	C3	T3S2	T3S3	T3S2R4	OTROS	A	B	C	K'	D	LATITUD	LONGITUD
Tepic	0.00	3	1	20595	10.4	85.2	0.5	2.4	0.8	0.3	0.2	0.1	0.1	95.6	0.5	3.9	0.073	0.513	21.491368	-104.895579
Tepic	0.00	3	2	19812	10.6	84.9	0.6	2.6	0.6	0.4	0.1	0.1	0.1	95.5	0.6	3.9	0.072	0.513	21.491400	-104.895447
Limite de Zona Urbana Tepic	1.80	3	1	16436	5.8	84.0	1.8	4.5	1.4	1.0	0.4	0.5	0.6	89.8	1.8	8.4	0.074	0.530	21.474678	-104.890181
Limite de Zona Urbana Tepic	1.80	3	2	18280	6.0	83.7	1.7	4.7	1.6	1.2	0.3	0.4	0.4	89.7	1.7	8.6	0.075	0.530	21.474704	-104.890057
X. C. Libramiento De Tepic (Baja)	3.90	3	1	8219	15.3	76.4	1.5	5.2	0.9	0.4	0.1	0.2	0.0	91.7	1.5	6.8	0.078	0.504	21.465374	-104.889225
X. C. Libramiento De Tepic (Alta)	3.90	3	1	16159	2.4	96.2	0.1	0.2	0.3	0.2	0.0	0.5	0.1	98.6	0.1	1.3	0.070	0.504	21.465584	-104.888934
X. C. Libramiento De Tepic (Alta)	3.90	3	2	18891	2.3	95.9	0.2	0.3	0.4	0.2	0.0	0.6	0.1	98.2	0.2	1.6	0.084	0.504	21.465422	-104.888960
X. C. Libramiento De Tepic (Baja)	3.90	3	2	7973	15.4	76.4	1.4	5.2	1.0	0.3	0.1	0.2	0.0	91.8	1.4	6.8	0.082	0.504	21.465555	-104.888747
Jalisco	7.15	3	0	14094	7.7	85.1	1.0	2.9	1.2	0.9	0.4	0.7	0.1	92.8	1.0	6.2	0.075	0.542	21.432536	-104.899472
T. Izq. Emiliano Zapata	18.40	3	0	6879	3.0	87.2	2.6	3.7	1.3	1.3	0.5	0.4	0.0	90.2	2.6	7.2	0.085	0.627	21.357789	-104.919289
T. Izq. Compostela (1° Acceso)	35.80	1	0	5936	6.6	81.3	2.6	4.7	1.9	1.5	0.8	0.5	0.1	87.9	2.6	9.5	0.084	0.593	21.256329	-104.901552
T. Izq. Compostela (1° Acceso)	35.80	3	0	6231	7.0	82.6	2.1	3.5	2.0	1.8	0.7	0.3	0.0	89.6	2.1	8.3	0.073	0.625	21.248267	-104.903293
Las Varas	71.30	1	0	12706	11.9	77.2	2.3	3.4	2.1	1.7	0.7	0.4	0.3	89.1	2.3	8.6	0.068	0.627	21.187629	-105.122835
Las Varas	71.30	3	0	20594	7.0	83.7	2.0	2.9	1.8	1.2	0.6	0.6	0.2	90.7	2.0	7.3	0.066	0.541	21.172071	-105.147726
T. Izq. Altavista	81.50	1	0	12962	6.9	81.5	3.5	3.5	1.4	1.6	0.7	0.6	0.3	88.4	3.5	8.1	0.063	0.623	21.112370	-105.177809
T. Der. Rincón de Guayabitos	94.50	1	1	14826	10.7	80.3	2.2	3.0	1.2	1.4	0.3	0.7	0.2	91.0	2.2	6.8	0.086	0.606	21.030749	-105.255949
T. Der. Rincón de Guayabitos	94.50	1	2	13243	10.4	80.4	2.5	2.9	1.2	1.2	0.5	0.6	0.3	90.8	2.5	6.7	0.083	0.606	21.030681	-105.255892
T. Der. Rincón de Guayabitos	94.50	3	0	10805	12.1	77.9	2.1	3.1	2.2	1.4	0.5	0.6	0.1	90.0	2.1	7.9	0.073	0.560	21.011774	-105.271645
T. Der. Lo de Marcos	107.61	1	1	4819	10.8	75.9	3.1	4.3	1.8	2.1	0.9	0.8	0.3	86.7	3.1	10.2	0.068	0.525	20.952281	-105.344293
T. Der. Lo de Marcos	107.61	1	2	4907	10.6	76.6	3.1	4.1	1.7	2.4	0.6	0.5	0.4	87.2	3.1	9.7	0.087	0.525	20.952175	-105.344285
T. Der. Lo de Marcos	107.61	3	0	8924	9.8	76.8	3.4	4.8	1.8	2.2	0.7	0.4	0.1	86.6	3.4	10.0	0.078	0.632	20.947844	-105.353572
T. Der. Sayulita	122.91	1	0	11596	6.7	78.7	3.6	4.5	2.6	2.8	0.7	0.4	0.0	85.4	3.6	11.0	0.079	0.548	20.874779	-105.426995
T. Der. Sayulita	122.91	3	0	12482	7.4	75.9	3.1	8.2	1.7	1.9	0.8	0.6	0.4	83.3	3.1	13.6	0.081	0.585	20.860239	-105.424809
T. Der. Cruz de Juanacaxtle	137.30	3	1	19647	6.2	84.7	2.4	3.8	1.6	0.8	0.3	0.1	0.1	90.9	2.4	6.7	0.125	0.598	20.763591	-105.360666
T. Der. Cruz de Juanacaxtle	137.30	3	2	19012	6.3	84.3	2.4	3.9	1.8	0.7	0.3	0.1	0.2	90.6	2.4	7.0	0.116	0.598	20.763711	-105.360634
Bucerías	140.81	3	1	27455	7.0	85.3	1.8	3.1	1.8	0.5	0.2	0.2	0.1	92.3	1.8	5.9	0.089	0.541	20.749280	-105.318991
Bucerías	140.81	3	2	25312	6.8	85.5	2.0	3.3	1.5	0.4	0.2	0.2	0.1	92.3	2.0	5.7	0.088	0.541	20.749386	-105.318953
Lim. Edos. Term. Nay. Ppia. Jal.	152.60																			

NAYARIT

19 CARR : Tepic - Puerto Vallarta

CLAVE: 00068

RUTA: MEX-200

AÑO : 2025

LUGAR	ESTACION				CLASIFICACION VEHICULAR EN PORCIENTO													COORDENADAS			
	KM	TE	SC	TDPA	M	A	B	C2	C3	T3S2	T3S3	T3S2R4	OTROS	A	B	C	K'	D	LATITUD	LONGITUD	
T. C. Mascota - Puerto Vallarta	154.80																				
T. C. Tepic - Puerto Vallarta (Cuota)	155.90																				
T. Der. Aeropuerto Díaz Ordáz	158.37	1	1	32029	7.6	82.4	2.4	4.8	0.8	0.7	0.4	0.5	0.4	90.0	2.4	7.6	0.067	0.500	20.687581	-105.236493	
T. Der. Aeropuerto Díaz Ordáz	158.37	1	2	31452	7.3	82.6	2.6	5.0	1.0	0.5	0.2	0.5	0.3	89.9	2.6	7.5	0.067	0.500	20.687453	-105.236472	
T. Der. Aeropuerto Díaz Ordáz (Alta)	158.37	3	1	21600	4.2	93.2	0.4	0.8	0.5	0.2	0.3	0.3	0.1	97.4	0.4	2.2	0.072	0.514	20.670371	-105.249319	
T. Der. Aeropuerto Díaz Ordáz (Baja)	158.37	3	1	14935	8.5	80.5	3.4	5.8	0.9	0.5	0.1	0.2	0.1	89.0	3.4	7.6	0.083	0.514	20.670677	-105.249561	
T. Der. Aeropuerto Díaz Ordáz (Baja)	158.37	3	2	15435	8.3	80.2	3.6	5.9	1.2	0.4	0.1	0.2	0.1	88.5	3.6	7.9	0.078	0.514	20.670410	-105.249135	
T. Der. Aeropuerto Díaz Ordáz (Alta)	158.37	3	2	21814	4.4	92.9	0.3	0.9	0.4	0.3	0.2	0.5	0.1	97.3	0.3	2.4	0.066	0.514	20.670454	-105.249263	
Puerto Vallarta	166.88																				

20 CARR : Chapalilla - Compostela (Cuota)

CLAVE: 18004

RUTA: MEX-068D

AÑO : 2025

LUGAR	ESTACION				CLASIFICACION VEHICULAR EN PORCIENTO													COORDENADAS		
	KM	TE	SC	TDPA	M	A	B	C2	C3	T3S2	T3S3	T3S2R4	OTROS	A	B	C	K'	D	LATITUD	LONGITUD
T. C. Guadalajara - Tepic	0.00	3	0	4356	4.8	82.3	4.0	4.4	1.4	2.0	1.0	0.1	0.0	87.1	4.0	8.9	0.086	0.515	21.190283	-104.643157
T. C. Ramal a Compostela (Cuota)	30.00	1	0	3077	6.6	74.7	4.2	5.1	2.6	3.4	2.0	1.3	0.1	81.3	4.2	14.5	0.080	0.619	21.233234	-104.862561
Plaza de Cobro Compostela	31.50	2	0	2930	2.9	85.3	3.7	3.4	2.1	1.5	0.7	0.1	0.3	88.2	3.7	8.1	0.114	0.500	21.229532	-104.887408
T. Der. Compostela	33.00	1	0	11669	3.1	78.6	6.6	4.2	1.5	3.0	1.2	1.4	0.4	81.7	6.6	11.7	0.089	0.505	21.228086	-104.899312
T. C. Tepic - Puerto Vallarta	35.60	1	0	10181	3.0	80.4	5.2	4.3	1.9	2.7	1.2	1.1	0.2	83.4	5.2	11.4	0.082	0.535	21.229786	-104.913744

21 CARR : Guadalajara - Tepic (Cuota)

CLAVE: 00033

RUTA: MEX-015D

AÑO : 2025

LUGAR	ESTACION				CLASIFICACION VEHICULAR EN PORCIENTO													COORDENADAS		
	KM	TE	SC	TDPA	M	A	B	C2	C3	T3S2	T3S3	T3S2R4	OTROS	A	B	C	K'	D	LATITUD	LONGITUD
T. C. Guadalajara - Tepic (Libre)	0.00	3	1	6458	4.2	71.1	7.8	3.9	2.3	7.1	1.4	1.8	0.4	75.3	7.8	16.9	0.095	0.680	20.739688	-103.583269
T. C. Guadalajara - Tepic (Libre)	0.00	3	2	6423	4.3	71.6	7.6	3.8	1.9	7.2	1.5	1.7	0.4	75.9	7.6	16.5	0.131	0.680	20.739543	-103.583278
Plaza de Cobro Arenal	10.96	2	1	5582	1.0	72.4	7.1	3.2	3.7	8.9	1.6	1.2	0.9	73.4	7.1	19.5	0.092	0.500	20.778775	-103.662396
Plaza de Cobro Arenal	10.96	2	2	5582	1.0	72.4	7.1	3.2	3.7	8.9	1.6	1.2	0.9	73.4	7.1	19.5	0.092	0.500	20.778775	-103.662396
T. Izq. Libramiento Sur de Guadalajara (Cuota)	16.44	3	1	9076	1.9	66.4	8.2	4.5	2.8	12.0	1.8	1.9	0.5	68.3	8.2	23.5	0.097	0.718	20.796736	-103.721732
T. Izq. Libramiento Sur de Guadalajara (Cuota)	16.44	3	2	8771	1.7	66.4	7.7	4.0	3.1	12.5	2.3	1.8	0.5	68.1	7.7	24.2	0.134	0.718	20.796692	-103.721886
T. Der. Magdalena	45.00	1	1	9209	3.0	59.6	10.5	5.8	1.9	13.4	2.2	2.9	0.7	62.6	10.5	26.9	0.067	0.687	20.900770	-103.958691
T. Der. Magdalena	45.00	1	2	9282	3.2	61.9	9.3	4.4	2.6	13.0	2.3	2.6	0.7	65.1	9.3	25.6	0.088	0.687	20.900723	-103.958763
T. Der. Magdalena	45.00	3	1	8946	3.2	60.2	8.3	4.9	3.9	13.8	2.4	2.6	0.7	63.4	8.3	28.3	0.069	0.592	20.901708	-103.977309
T. Der. Magdalena	45.00	3	2	9080	2.3	61.0	10.2	4.7	2.7	13.8	2.3	2.4	0.6	63.3	10.2	26.5	0.083	0.592	20.901528	-103.977293
Plaza de Cobro Plan de Barrancas	69.34	2	1	7213	0.7	60.9	5.9	3.7	5.3	16.0	2.7	3.2	1.6	61.6	5.9	32.5	0.092	0.500	21.005434	-104.144062

NAYARIT

21 CARR: Guadalajara - Tepic (Cuota)

CLAVE: 00033

RUTA: MEX-015D

AÑO: 2025

LUGAR	ESTACION				CLASIFICACION VEHICULAR EN PORCIENTO										COORDENADAS					
	KM	TE	SC	TDPA	M	A	B	C2	C3	T3S2	T3S3	T3S2R4	OTROS	A	B	C	K'	D	LATITUD	LONGITUD
Plaza de Cobro Plan de Barrancas	69.34	2	2	7213	0.7	60.9	5.9	3.7	5.3	16.0	2.7	3.2	1.6	61.6	5.9	32.5	0.092	0.500	21.005434	-104.144062
Lim. Edos. Term. Jal. Ppia. Nay.	84.60																			
T. Izq. Ixtlán del Río	97.20	1	1	6845	2.9	63.3	8.6	4.0	3.3	13.3	1.3	2.5	0.8	66.2	8.6	25.2	0.070	0.544	21.046858	-104.349402
T. Izq. Ixtlán del Río	97.20	1	2	7152	2.7	65.0	8.7	3.8	3.0	13.0	1.0	2.3	0.5	67.7	8.7	23.6	0.084	0.544	21.046783	-104.349529
T. Izq. Compostela (Cuota)	106.00	1	1	8995	3.3	63.4	8.6	6.1	3.0	11.0	1.7	2.3	0.6	66.7	8.6	24.7	0.074	0.615	21.072621	-104.419962
T. Izq. Compostela (Cuota)	106.00	1	2	9231	3.3	62.4	8.8	6.4	3.2	11.2	1.7	2.4	0.6	65.7	8.8	25.5	0.091	0.615	21.072593	-104.420041
T. Izq. Compostela (Cuota)	106.00	3	1	6963	2.9	64.3	8.4	3.7	2.5	13.0	1.8	2.7	0.7	67.2	8.4	24.4	0.071	0.529	21.084354	-104.431220
T. Izq. Compostela (Cuota)	106.00	3	2	6810	3.4	61.2	9.0	4.5	2.3	14.1	2.1	2.7	0.7	64.6	9.0	26.4	0.092	0.529	21.084283	-104.431272
T. Der. Jala	107.00	3	1	5667	3.4	62.3	8.3	4.5	2.4	13.5	1.8	3.0	0.8	65.7	8.3	26.0	0.072	0.603	21.096493	-104.448233
T. Der. Jala	107.00	3	2	5343	3.7	58.9	10.0	5.2	2.3	14.2	2.1	2.8	0.8	62.6	10.0	27.4	0.090	0.603	21.096428	-104.448293
X. C. Ramal a Tequepexpan	130.42	3	1	5553	2.5	62.1	9.6	4.5	2.2	14.1	1.7	2.4	0.9	64.6	9.6	25.8	0.082	0.524	21.222149	-104.600262
X. C. Ramal a Tequepexpan	130.42	3	2	5528	2.5	61.6	9.4	4.7	2.4	14.2	1.8	2.6	0.8	64.1	9.4	26.5	0.090	0.524	21.222113	-104.600319
Plaza de Cobro Santa Ma. del Oro	145.32	3	1	5562	4.3	61.2	8.6	4.0	2.8	13.4	1.6	3.2	0.9	65.5	8.6	25.9	0.071	0.591	21.333146	-104.668005
Plaza de Cobro Santa Ma. del Oro	145.32	3	2	5205	4.5	61.0	8.7	3.7	2.7	14.1	1.6	3.0	0.7	65.5	8.7	25.8	0.116	0.591	21.333099	-104.668070
T. Der. Libramiento de Tepic (Cuota)	163.00	1	1	5480	3.6	58.3	8.4	5.1	3.5	14.7	2.1	3.4	0.9	61.9	8.4	29.7	0.074	0.563	21.430637	-104.786309
T. Der. Libramiento de Tepic (Cuota)	163.00	1	2	5499	3.6	58.6	8.5	5.1	3.5	14.5	2.0	3.4	0.8	62.2	8.5	29.3	0.075	0.563	21.430590	-104.786384
T. C. Guadalajara - Tepic	168.80	1	1	4027	1.9	67.8	8.5	5.1	2.9	10.1	1.5	1.6	0.6	69.7	8.5	21.8	0.090	0.571	21.462934	-104.826801
T. C. Guadalajara - Tepic	168.80	1	2	4014	1.7	68.3	8.7	4.9	3.2	9.9	1.4	1.4	0.5	70.0	8.7	21.3	0.082	0.571	21.462864	-104.826844

22 CARR: Jala - Las Caleras (Cuota)

CLAVE:

RUTA: MEX-070D

AÑO: 2025

LUGAR	ESTACION				CLASIFICACION VEHICULAR EN PORCIENTO										COORDENADAS					
	KM	TE	SC	TDPA	M	A	B	C2	C3	T3S2	T3S3	T3S2R4	OTROS	A	B	C	K'	D	LATITUD	LONGITUD
T. C. Guadalajara - Tepic (Cuota)	0.00	3	1	3191	2.3	76.3	8.2	3.7	2.8	3.7	1.8	1.1	0.1	78.6	8.2	13.2	0.105	0.771	21.078892	-104.432514
T. C. Guadalajara - Tepic (Cuota)	0.00	3	2	3123	1.9	76.6	8.8	3.2	2.5	3.8	1.8	1.3	0.1	78.5	8.8	12.7	0.118	0.771	21.078803	-104.432533
Plaza de Cobro Amado Nervo	32.00	2	1	3225	1.2	82.4	5.8	2.6	2.2	3.3	1.0	0.9	0.6	83.6	5.8	10.6	0.090	0.500	21.089054	-104.717268
Plaza de Cobro Amado Nervo	32.00	2	2	3225	1.2	82.4	5.8	2.6	2.2	3.3	1.0	0.9	0.6	83.6	5.8	10.6	0.090	0.500	21.089054	-104.717268
T. C. Tepic - Puerto Vallarta (Cuota)	54.30																			

23 CARR: Libramiento de Tepic (Cuota)

CLAVE:

RUTA: MEX-015D

AÑO: 2025

LUGAR	ESTACION				CLASIFICACION VEHICULAR EN PORCIENTO										COORDENADAS					
	KM	TE	SC	TDPA	M	A	B	C2	C3	T3S2	T3S3	T3S2R4	OTROS	A	B	C	K'	D	LATITUD	LONGITUD
T. C. Guadalajara - Tepic	0.00																			
T. C. Guadalajara - Tepic (Cuota)	0.70	3	0	3482	4.8	44.2	8.0	4.2	2.8	27.1	2.6	5.8	0.5	49.0	8.0	43.0	0.063	0.571	21.453855	-104.802840

NAYARIT

23 CARR: Libramiento de Tepic (Cuota)

CLAVE:

RUTA: MEX-015D

AÑO: 2025

LUGAR	ESTACION				CLASIFICACION VEHICULAR EN PORCIENTO														COORDENADAS	
	KM	TE	SC	TDPA	M	A	B	C2	C3	T3S2	T3S3	T3S2R4	OTROS	A	B	C	K'	D	LATITUD	LONGITUD
Plaza de Cobro La Cantera	7.70	2	0	2906	0.5	22.2	2.5	3.5	5.6	46.5	3.9	11.7	3.6	22.7	2.5	74.8	0.090	0.500	21.498477	-104.813387
T. C. Tepic - Villa Unión (Cuota)	29.47	1	0	4414	4.9	49.6	4.8	3.8	3.1	25.2	2.7	5.1	0.8	54.5	4.8	40.7	0.061	0.576	21.566083	-104.958172

24 CARR: Ramal a Tequepexpan

CLAVE: 00068

RUTA: MEX-015D

AÑO: 2025

LUGAR	ESTACION				CLASIFICACION VEHICULAR EN PORCIENTO														COORDENADAS	
	KM	TE	SC	TDPA	M	A	B	C2	C3	T3S2	T3S3	T3S2R4	OTROS	A	B	C	K'	D	LATITUD	LONGITUD
Chapalilla	0.00	3	0	2103	4.5	83.3	3.4	3.2	1.6	2.7	0.4	0.8	0.1	87.8	3.4	8.8	0.078	0.530	21.181043	-104.628246
T. C. Guadalajara - Tepic (Cuota)	9.40	1	0	1665	4.4	82.4	3.6	2.9	2.0	2.9	1.0	0.8	0.0	86.8	3.6	9.6	0.077	0.539	21.209493	-104.594071

25 CARR: Tepic - Puerto Vallarta (Cuota)

CLAVE:

RUTA: MEX-200D

AÑO: 2025

LUGAR	ESTACION				CLASIFICACION VEHICULAR EN PORCIENTO														COORDENADAS	
	KM	TE	SC	TDPA	M	A	B	C2	C3	T3S2	T3S3	T3S2R4	OTROS	A	B	C	K'	D	LATITUD	LONGITUD
Ent. San Cayetano	13.73																			
X. C. Chapalilla - Compostela (Cuota)	41.63	3	0	6633	1.4	82.7	7.8	4.1	1.4	1.7	0.6	0.2	0.1	84.1	7.8	8.1	0.095	0.633	21.226968	-104.874860
Ent. Las Caleras	54.70	1	0	1588	1.8	87.2	4.1	3.6	1.2	1.4	0.4	0.3	0.0	89.0	4.1	6.9	0.102	0.673	21.145895	-104.909658
Ent. Las Caleras	54.70	3	1	3629	18.1	66.6	3.9	3.8	2.7	3.1	0.8	0.9	0.1	84.7	3.9	11.4	0.127	0.756	21.143339	-104.932322
Ent. Las Caleras	54.70	3	2	3604	17.7	66.9	4.2	4.3	2.3	3.4	0.4	0.7	0.1	84.6	4.2	11.2	0.170	0.756	21.143258	-104.932360
Ent. El Capomo	83.40	1	1	3613	17.5	76.2	1.1	0.6	0.2	3.0	0.1	1.2	0.1	93.7	1.1	5.2	0.128	0.738	21.122764	-105.152556
Ent. El Capomo	83.40	1	2	3313	18.3	74.1	1.1	0.6	0.3	3.5	0.1	1.8	0.2	92.4	1.1	6.5	0.173	0.738	21.122728	-105.152479
Ent. El Capomo	83.40	3	0	5323	1.6	80.0	8.1	3.7	1.3	3.2	1.1	0.9	0.1	81.6	8.1	10.3	0.138	0.745	21.110786	-105.162543
Ent. La Peñita	92.10	1	0	5310	1.5	80.1	7.9	3.8	1.2	3.4	1.2	0.8	0.1	81.6	7.9	10.5	0.140	0.727	21.078000	-105.205728
Ent. La Peñita	92.10	3	0	4639	1.8	80.1	6.4	4.6	1.5	3.1	1.3	1.1	0.1	81.9	6.4	11.7	0.142	0.740	21.056364	-105.223949
Ent. La Florida	107.10	1	0	4636	1.8	80.6	6.5	4.2	1.3	3.4	1.2	0.9	0.1	82.4	6.5	11.1	0.140	0.745	20.979539	-105.292592
Ent. La Florida	107.10	3	0	4851	1.9	79.4	7.0	4.6	1.2	3.3	1.3	1.1	0.2	81.3	7.0	11.7	0.133	0.736	20.959955	-105.310494
Ent. San Vicente	135.90	1	0	4839	2.2	78.8	6.8	5.5	1.3	3.1	0.9	1.2	0.2	81.0	6.8	12.2	0.132	0.741	20.788573	-105.374778
Ent. San Vicente	135.90	3	0	1807	1.5	81.4	4.9	4.0	1.6	4.0	1.0	1.5	0.1	82.9	4.9	12.2	0.126	0.526	20.786684	-105.357911
Lim. Edos. Term. Nay. Ppia. Jal.	155.12																			
Puerto Vallarta	168.72																			

NAYARIT

26 CARR: Tepic - San Blas (Cuota)

CLAVE:

RUTA: MEX-D

AÑO: 2025

LUGAR	ESTACION				CLASIFICACION VEHICULAR EN PORCIENTO										COORDENADAS					
	KM	TE	SC	TDPA	M	A	B	C2	C3	T3S2	T3S3	T3S2R4	OTROS	A	B	C	K'	D	LATITUD	LONGITUD
T. C Tepic - Villa Unión (Cuota)	0.00	3	0	4047	4.1	91.1	1.0	1.8	1.3	0.5	0.1	0.1	0.0	95.2	1.0	3.8	0.214	0.822	21.558416	-104.980978
El Camalote (T. C. Sta. Cruz - San Blas)	31.00	1	0	4725	4.2	90.0	0.8	2.8	1.6	0.6	0.0	0.0	0.0	94.2	0.8	5.0	0.233	0.670	21.512270	-105.193962

27 CARR: Tepic - Villa Unión (cuota)

CLAVE: 00500

RUTA: MEX-015D

AÑO: 2025

LUGAR	ESTACION				CLASIFICACION VEHICULAR EN PORCIENTO										COORDENADAS					
	KM	TE	SC	TDPA	M	A	B	C2	C3	T3S2	T3S3	T3S2R4	OTROS	A	B	C	K'	D	LATITUD	LONGITUD
Tepic	0.00																			
Lib. de Tepic (Cuota)	6.60																			
Plaza de Cobro Trapichillo	8.65	1	1	7285	2.5	80.4	4.3	3.9	1.8	5.0	1.0	0.8	0.3	82.9	4.3	12.8	0.114	0.505	21.555588	-104.960275
Plaza de Cobro Trapichillo	8.65	1	2	6649	2.6	80.6	4.2	3.8	1.7	4.9	1.1	0.9	0.2	83.2	4.2	12.6	0.110	0.505	21.553746	-104.959309
Plaza de Cobro Trapichillo	8.65	2	1	4741	0.9	57.4	6.1	4.0	4.5	19.3	2.0	4.2	1.6	58.3	6.1	35.6	0.098	0.500	21.571789	-104.987394
Plaza de Cobro Trapichillo	8.65	2	2	4741	0.9	57.4	6.1	4.0	4.5	19.3	2.0	4.2	1.6	58.3	6.1	35.6	0.098	0.500	21.571789	-104.987394
T. C. Tepic - Mazatlán	20.25	1	1	6920	3.9	67.9	8.2	4.4	2.4	6.8	1.9	3.6	0.9	71.8	8.2	20.0	0.062	0.500	21.664169	-105.027340
T. C. Tepic - Mazatlán	20.25	1	2	6477	3.8	68.1	8.3	4.3	2.4	6.4	2.0	3.9	0.8	71.9	8.3	19.8	0.063	0.500	21.662889	-105.027844
T. C. Tepic - Mazatlán (Crucero de San Blas)	26.59	3	0	6583	5.6	50.8	10.4	6.3	1.9	17.3	2.1	4.8	0.8	56.4	10.4	33.2	0.071	0.513	21.714574	-105.060457
Est. Ruíz	54.90	1	0	7271	6.4	44.2	10.3	5.4	3.0	21.0	2.4	6.3	1.0	50.6	10.3	39.1	0.059	0.545	21.947691	-105.112499
Est. Ruíz	54.90	3	0	5909	3.1	41.4	12.1	7.7	1.7	23.8	3.1	6.5	0.6	44.5	12.1	43.4	0.057	0.557	21.965080	-105.124606
Rosamorada	73.50	1	0	6847	5.4	41.7	10.9	6.0	3.0	23.3	2.5	6.3	0.9	47.1	10.9	42.0	0.056	0.525	22.084156	-105.210249
Rosamorada	73.50	3	0	6934	5.2	42.1	10.7	6.9	2.4	23.0	2.3	6.6	0.8	47.3	10.7	42.0	0.062	0.593	22.093443	-105.222010
Acaponeta	120.20	1	0	5568	5.8	40.9	10.6	4.4	2.2	26.1	2.4	6.8	0.8	46.7	10.6	42.7	0.062	0.510	22.446304	-105.418002
Plaza de Cobro Acaponeta	120.20	2	0	4026	0.3	29.1	5.9	4.4	5.8	38.7	3.0	9.7	3.1	29.4	5.9	64.7	0.081	0.500	22.454065	-105.418726
Acaponeta	120.20	3	0	5537	3.2	40.1	9.5	6.3	3.4	25.9	2.6	8.1	0.9	43.3	9.5	47.2	0.067	0.596	22.458726	-105.430825
Lim. Edos. Term. Nay. Ppia. Sin.	132.80																			
T. C. Tepic - Mazatlán	164.00	1	0	5962	8.8	41.3	7.7	4.8	3.5	22.3	3.1	7.7	0.8	50.1	7.7	42.2	0.064	0.514	22.752368	-105.650968
Escuinapa de Hidalgo	180.00	1	1	2889	6.0	39.0	9.7	5.6	2.9	26.3	2.7	7.0	0.8	45.0	9.7	45.3	0.075	0.564	22.841595	-105.739778
Escuinapa de Hidalgo	180.00	1	2	2745	6.6	37.2	9.4	5.9	3.0	26.5	2.9	7.6	0.9	43.8	9.4	46.8	0.080	0.564	22.841576	-105.739824
Escuinapa de Hidalgo	180.00	3	0	6235	4.6	38.4	9.7	5.3	2.4	29.0	2.6	7.1	0.9	43.0	9.7	47.3	0.065	0.546	22.860335	-105.755794
Rosario	199.50	1	0	5533	6.2	42.6	12.3	5.4	2.2	21.9	2.2	6.4	0.8	48.8	12.3	38.9	0.094	0.564	22.967440	-105.857010
Plaza de Cobro Rosario	199.50	2	0	4786	0.7	33.3	6.0	4.0	4.8	36.1	3.4	8.7	3.0	34.0	6.0	60.0	0.081	0.500	22.984690	-105.878103
Rosario	199.50	3	1	3753	5.0	38.6	12.6	9.9	2.9	21.5	2.6	5.9	1.0	43.6	12.6	43.8	0.064	0.519	22.993107	-105.887619
Rosario	199.50	3	2	3486	4.9	39.0	12.4	9.9	2.7	21.3	2.6	6.2	1.0	43.9	12.4	43.7	0.075	0.519	22.993102	-105.887674
X. C. Durango - Villa Unión (Cuota)	238.50	1	0	6752	6.4	45.0	10.6	5.6	2.2	20.9	2.3	6.3	0.7	51.4	10.6	38.0	0.070	0.553	23.185894	-106.174192
X. C. Durango - Villa Unión (Cuota)	238.50	3	1	5472	7.7	47.5	10.5	4.5	2.9	17.8	2.2	6.2	0.7	55.2	10.5	34.3	0.079	0.635	23.195179	-106.192204
X. C. Durango - Villa Unión (Cuota)	238.50	3	2	5607	7.8	46.9	10.6	4.5	2.9	17.9	2.3	6.5	0.6	54.7	10.6	34.7	0.101	0.635	23.194939	-106.192330

NAYARIT

28 CARR: El Carrizo - La Batanga

CLAVE: 18107

RUTA: NAY-078

AÑO: 2025

LUGAR	ESTACION				CLASIFICACION VEHICULAR EN PORCIENTO										COORDENADAS					
	KM	TE	SC	TDPA	M	A	B	C2	C3	T3S2	T3S3	T3S2R4	OTROS	A	B	C	K'	D	LATITUD	LONGITUD
T. C. Ent. Santiago Ixcuintla - Playa Los Corchos	0.00	3	0	7271	21.5	72.2	0.7	1.7	2.9	0.6	0.1	0.3	0.0	93.7	0.7	5.6	0.068	0.584	21.776140	-105.279808
Sentispac	9.00	1	0	2481	38.7	59.3	0.4	0.8	0.4	0.2	0.1	0.1	0.0	98.0	0.4	1.6	0.072	0.506	21.808984	-105.341264
La Batanga	25.00	1	0	133	14.2	80.7	2.0	2.7	0.4	0.0	0.0	0.0	0.0	94.9	2.0	3.1	0.180	0.625	21.885564	-105.460781

29 CARR: Navarrete - Sauta

CLAVE: 18013

RUTA: NAY-013

AÑO: 2025

LUGAR	ESTACION				CLASIFICACION VEHICULAR EN PORCIENTO										COORDENADAS					
	KM	TE	SC	TDPA	M	A	B	C2	C3	T3S2	T3S3	T3S2R4	OTROS	A	B	C	K'	D	LATITUD	LONGITUD
T. C. Crucero San Blas - San Blas	0.00	3	0	1787	29.1	67.1	0.3	1.4	1.5	0.3	0.2	0.1	0.0	96.2	0.3	3.5	0.076	0.559	21.653210	-105.118178
Sauta	7.00	1	0	2471	28.1	63.9	1.5	2.8	2.3	1.0	0.2	0.1	0.1	92.0	1.5	6.5	0.096	0.517	21.709165	-105.136540

30 CARR: Ramal a Amado Nervo

CLAVE: 18011

RUTA: NAY

AÑO: 2025

LUGAR	ESTACION				CLASIFICACION VEHICULAR EN PORCIENTO										COORDENADAS					
	KM	TE	SC	TDPA	M	A	B	C2	C3	T3S2	T3S3	T3S2R4	OTROS	A	B	C	K'	D	LATITUD	LONGITUD
T. C. Guadalajara - Tepic	0.00	3	0	1371	9.8	86.8	0.4	2.4	0.5	0.1	0.0	0.0	0.0	96.6	0.4	3.0	0.086	0.559	21.128018	-104.609775
Amado Nervo	15.00																			

31 CARR: Ramal a Bellavista

CLAVE: 18059

RUTA: NAY-059

AÑO: 2025

LUGAR	ESTACION				CLASIFICACION VEHICULAR EN PORCIENTO										COORDENADAS					
	KM	TE	SC	TDPA	M	A	B	C2	C3	T3S2	T3S3	T3S2R4	OTROS	A	B	C	K'	D	LATITUD	LONGITUD
T. C. Tepic - Francisco I. Madero	0.00	3	0	3164	20.3	72.0	0.4	0.6	2.0	0.3	3.1	1.1	0.2	92.3	0.4	7.3	0.082	0.506	21.565000	-104.878764
Bellavista	1.30																			

32 CARR: Ramal a El Colomo

CLAVE: 18014

RUTA: NAY

AÑO: 2025

LUGAR	ESTACION				CLASIFICACION VEHICULAR EN PORCIENTO										COORDENADAS					
	KM	TE	SC	TDPA	M	A	B	C2	C3	T3S2	T3S3	T3S2R4	OTROS	A	B	C	K'	D	LATITUD	LONGITUD
T. C. Tepic - Puerto Vallarta	0.00																			
San Vicente	3.00	1	1	19970	12.0	80.5	1.8	3.2	1.0	0.6	0.4	0.3	0.2	92.5	1.8	5.7	0.081	0.598	20.742765	-105.256783
San Vicente	3.00	1	2	18805	11.6	80.3	1.9	3.6	1.0	0.7	0.4	0.3	0.2	91.9	1.9	6.2	0.092	0.598	20.742760	-105.256879
El Colomo	21.00																			

NAYARIT

33 CARR: Ramal a Estación Yago

CLAVE: 18224

RUTA: NAY

AÑO: 2025

LUGAR	ESTACION				CLASIFICACION VEHICULAR EN PORCIENTO														COORDENADAS	
	KM	TE	SC	TDPA	M	A	B	C2	C3	T3S2	T3S3	T3S2R4	OTROS	A	B	C	K'	D	LATITUD	LONGITUD
T. C. Tepic - Mazatlán	0.00	3	0	2436	24.1	66.8	1.7	2.9	2.8	1.2	0.3	0.2	0.0	90.9	1.7	7.4	0.078	0.513	21.833429	-105.105435
Estacion Yago	7.00																			

34 CARR: Ramal a Ixtapa de La Concepción

CLAVE: 18233

RUTA: NAY

AÑO: 2025

LUGAR	ESTACION				CLASIFICACION VEHICULAR EN PORCIENTO														COORDENADAS	
	KM	TE	SC	TDPA	M	A	B	C2	C3	T3S2	T3S3	T3S2R4	OTROS	A	B	C	K'	D	LATITUD	LONGITUD
T. C. Tepic - Puerto Vallarta (Las Varas)	0.00	3	0	5895	11.4	81.2	0.8	2.2	3.0	0.8	0.3	0.3	0.0	92.6	0.8	6.6	0.070	0.532	21.188787	-105.145269
Ixtapan de La Concepción	20.00	1	0	2586	28.6	65.1	1.1	2.2	1.6	0.7	0.4	0.2	0.1	93.7	1.1	5.2	0.081	0.579	21.301650	-105.157216

35 CARR: Ramal a Milpas Viejas

CLAVE: 18007

RUTA: NAY

AÑO: 2025

LUGAR	ESTACION				CLASIFICACION VEHICULAR EN PORCIENTO														COORDENADAS	
	KM	TE	SC	TDPA	M	A	B	C2	C3	T3S2	T3S3	T3S2R4	OTROS	A	B	C	K'	D	LATITUD	LONGITUD
T. C. Tepic - Mazatlán	0.00	3	0	1880	24.7	71.1	0.7	1.3	1.4	0.3	0.3	0.2	0.0	95.8	0.7	3.5	0.081	0.588	22.453471	-105.360902
Milpas Viejas	17.00																			

36 CARR: Ramal a Villa Hidalgo

CLAVE: 18031

RUTA: NAY

AÑO: 2025

LUGAR	ESTACION				CLASIFICACION VEHICULAR EN PORCIENTO														COORDENADAS	
	KM	TE	SC	TDPA	M	A	B	C2	C3	T3S2	T3S3	T3S2R4	OTROS	A	B	C	K'	D	LATITUD	LONGITUD
T. C. Tepic - Mazatlán	0.00	3	0	3778	12.6	78.5	2.1	2.8	1.9	1.4	0.5	0.2	0.0	91.1	2.1	6.8	0.082	0.531	21.803983	-105.114034
Villa Hidalgo	16.00	1	0	5138	9.9	84.5	1.1	2.1	0.7	0.9	0.4	0.4	0.0	94.4	1.1	4.5	0.072	0.514	21.754856	-105.227697

37 CARR: Ramal a Volcán del Ceboruco

CLAVE: 18003

RUTA: NAY

AÑO: 2025

LUGAR	ESTACION				CLASIFICACION VEHICULAR EN PORCIENTO														COORDENADAS	
	KM	TE	SC	TDPA	M	A	B	C2	C3	T3S2	T3S3	T3S2R4	OTROS	A	B	C	K'	D	LATITUD	LONGITUD
T. C. Guadalajara - Tepic	0.00	3	0	6034	8.2	76.3	4.1	5.5	1.7	2.2	1.3	0.7	0.0	84.5	4.1	11.4	0.074	0.561	21.052496	-104.459128
Volcán Ceboruco	25.00																			

NAYARIT

38 CARR: Tepic - Francisco I. Madero

CLAVE: 18009

RUTA: NAY-MEX-015

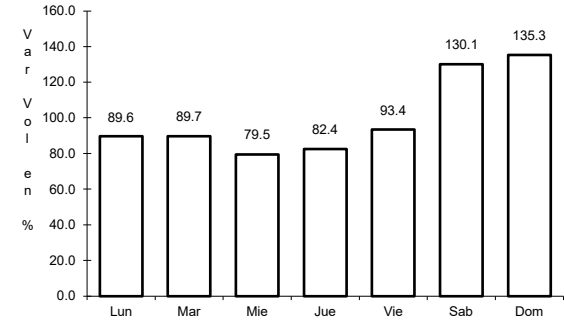
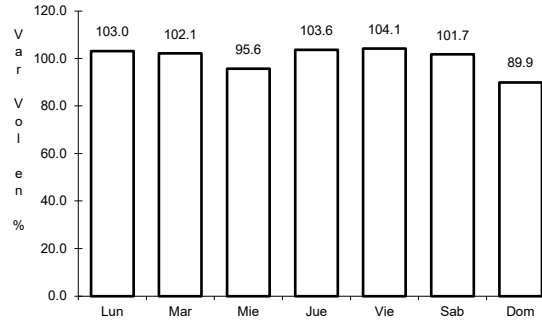
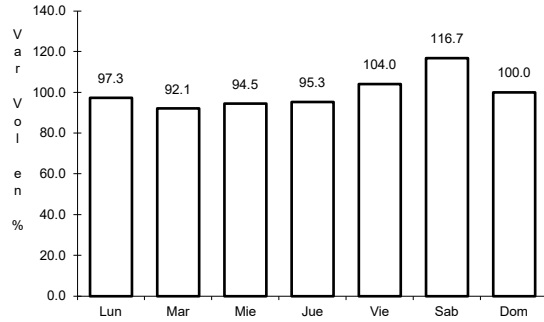
AÑO: 2025

L U G A R	E S T A C I O N				C L A S I F I C A C I O N V E H I C U L A R E N P O R C I E N T O													C O O R D E N A D A S		
	KM	TE	SC	TDPA	M	A	B	C2	C3	T3S2	T3S3	T3S2R4	OTROS	A	B	C	K'	D	LATITUD	LONGITUD
Tepic	0.00	3	0	8586	11.0	85.4	0.3	1.3	1.5	0.2	0.1	0.1	0.1	96.4	0.3	3.3	0.091	0.560	21.542969	-104.865074
Bellavista	9.00	3	0	5156	11.4	85.1	0.5	1.2	1.1	0.4	0.1	0.2	0.0	96.5	0.5	3.0	0.087	0.556	21.570082	-104.870845
Francisco I. Madero	16.00																			

1 CARR: Crucero de San Blas - San Blas

CLAVE: 18229

ruta: MEX-015



Km: 0.00 Tipo: 3 Sent: 0

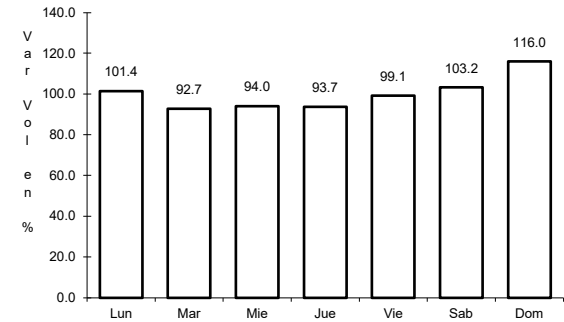
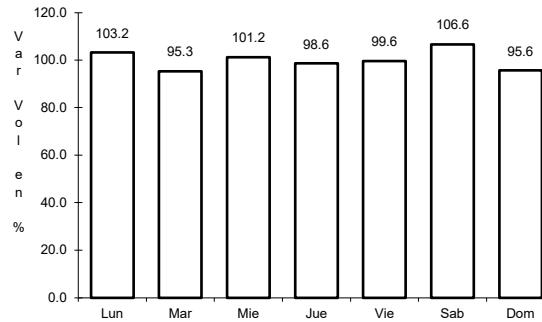
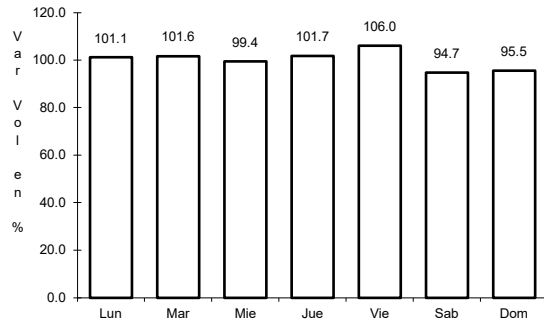
Km: 11.00 Tipo: 3 Sent: 0

Km: 36.00 Tipo: 1 Sent: 0

2 CARR: Ent. Acaponeta - El Novillero

CLAVE: 18023

ruta: MEX-015



Km: 0.00 Tipo: 3 Sent: 0

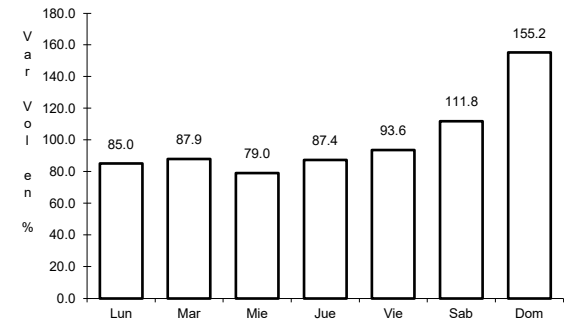
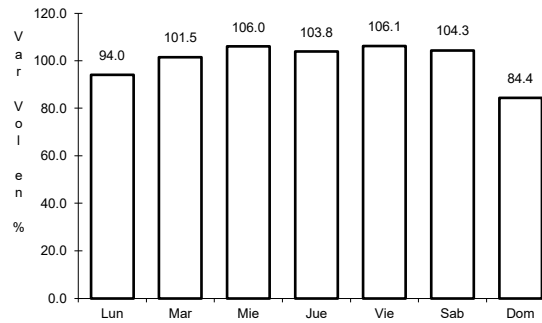
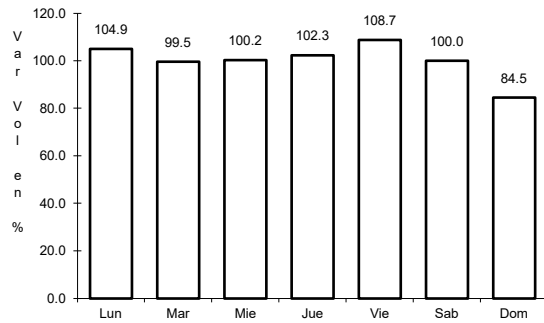
Km: 13.00 Tipo: 1 Sent: 0

Km: 36.00 Tipo: 1 Sent: 0

3 CARR: Ent. Santiago Ixcuintla - Playa Los Corchos

CLAVE: 18016

ruta: MEX-015



Km: 0.00 Tipo: 3 Sent: 1

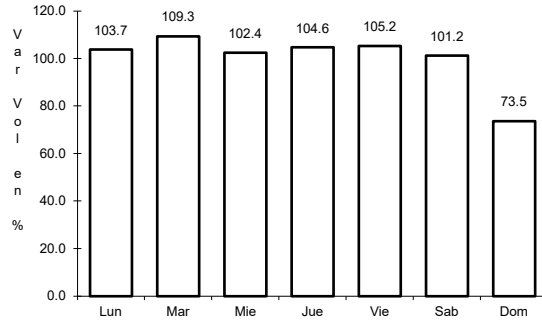
Km: 0.00 Tipo: 3 Sent: 2

Km: 39.00 Tipo: 1 Sent: 0

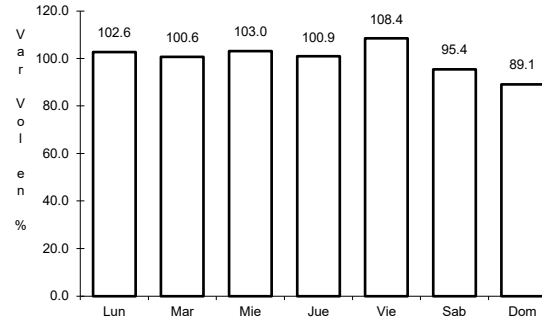
4 CARR: Guadalajara - Tepic

CLAVE: 00031

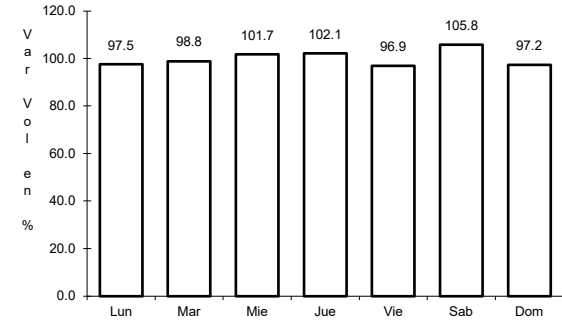
ruta: MEX-015



Km: 8.30 Tipo: 3 Sent: 1



Km: 8.30 Tipo: 3 Sent: 2

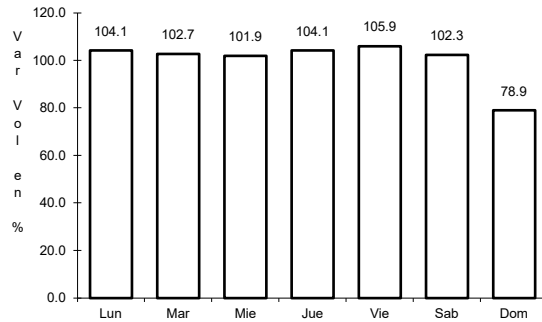


Km: 138.84 Tipo: 1 Sent: 0

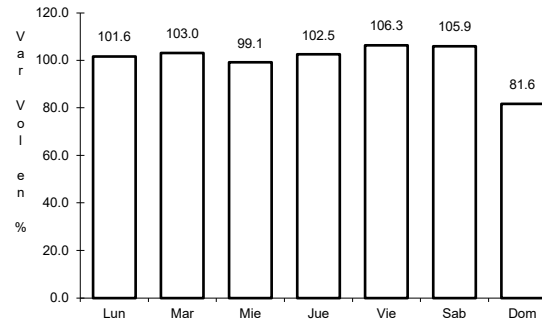
5 CARR: Libramiento de Tepic

CLAVE: 18232

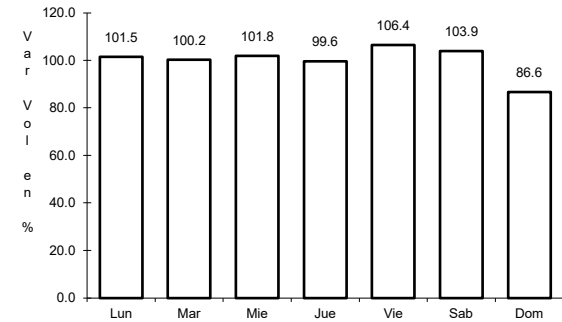
ruta: MEX-015



Km: 5.00 Tipo: 1 Sent: 1



Km: 5.00 Tipo: 1 Sent: 2

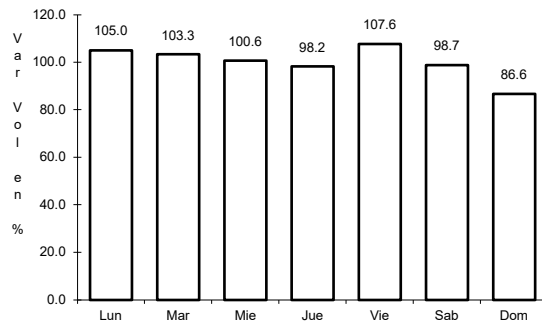


Km: 12.40 Tipo: 1 Sent: 1

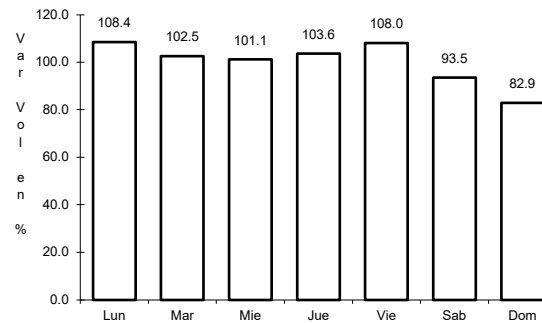
6 CARR: Peñitas - Tuxpan

CLAVE: 18019

ruta: MEX-015



Km: 0.00 Tipo: 3 Sent: 0

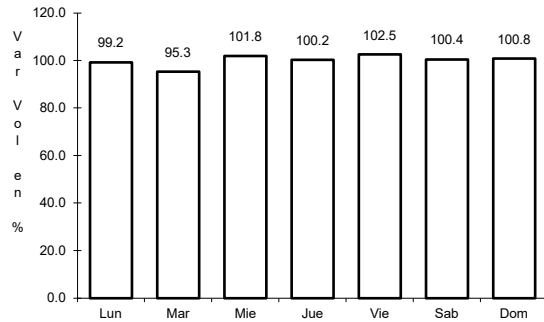


Km: 9.00 Tipo: 1 Sent: 0

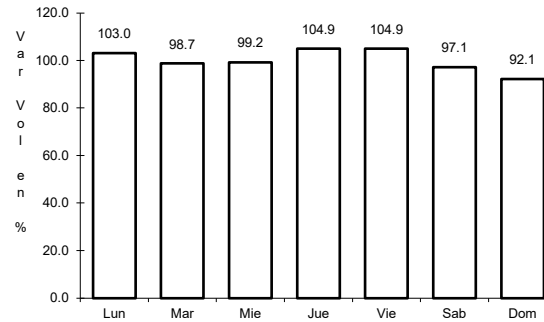
7 CARR: Ramal a Acaponeta

CLAVE: 18038

ruta: MEX-015



Km: 0.00 Tipo: 3 Sent: 1

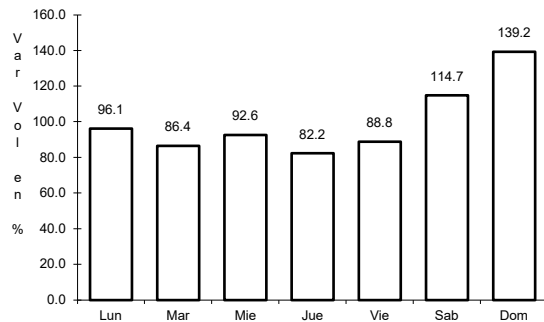


Km: 0.00 Tipo: 3 Sent: 2

8 CARR: Ramal a Estación Nanchi

CLAVE: 18068

ruta: MEX-015

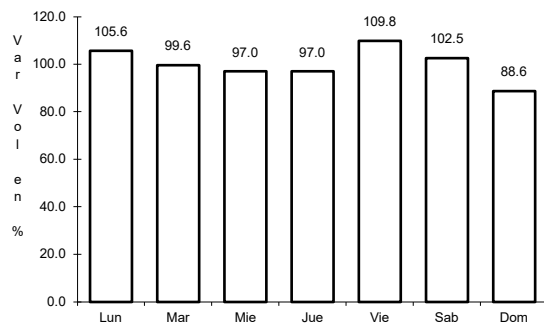


Km: 0.00 Tipo: 3 Sent: 0

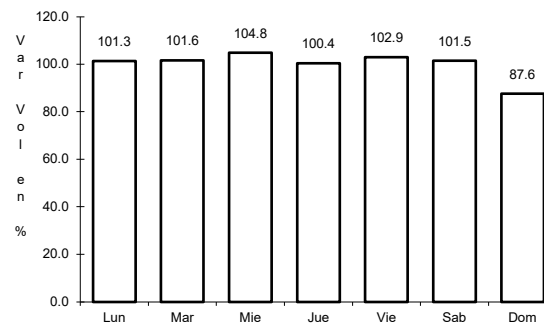
9 CARR: Ramal a Estación Ruíz

CLAVE: 18026

ruta: MEX-015



Km: 0.00 Tipo: 3 Sent: 0

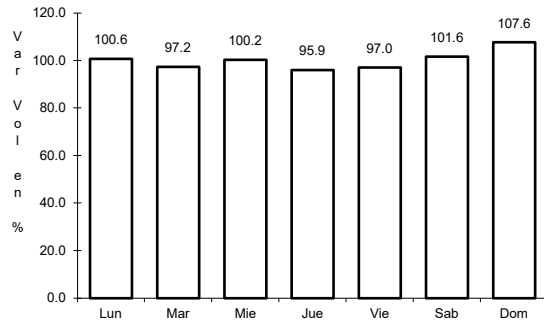


Km: 5.50 Tipo: 1 Sent: 0

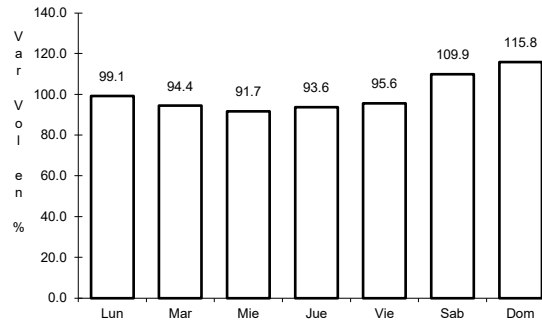
10 CARR: Ramal a La Laguna de Santa María

CLAVE: 18005

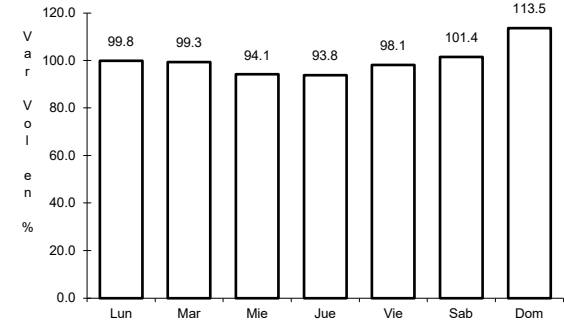
ruta: MEX-015



Km: 0.00 Tipo: 3 Sent: 0



Km: 11.50 Tipo: 1 Sent: 1

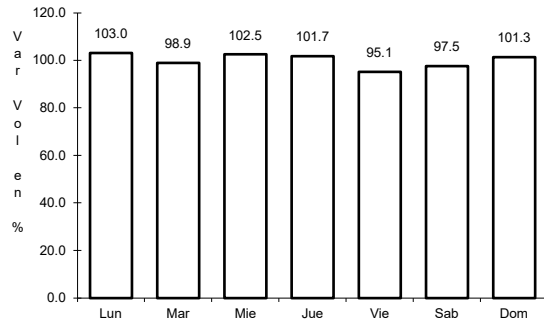


Km: 11.50 Tipo: 1 Sent: 2

11 CARR: Ramal a Mecatán

CLAVE: 18010

ruta: MEX-015

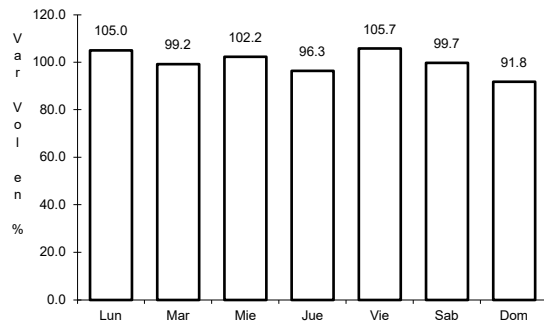


Km: 0.00 Tipo: 3 Sent: 0

12 CARR: Ramal a Nuevo Aeropuerto de Tepic

CLAVE: 18012

ruta: MEX-015

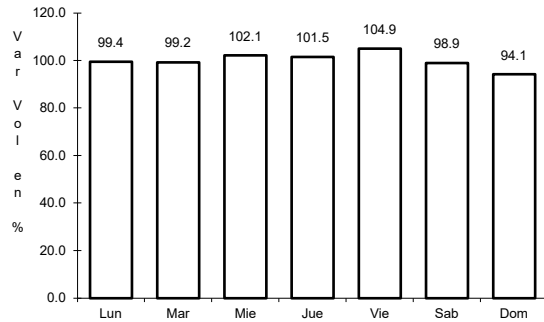


Km: 0.00 Tipo: 3 Sent: 0

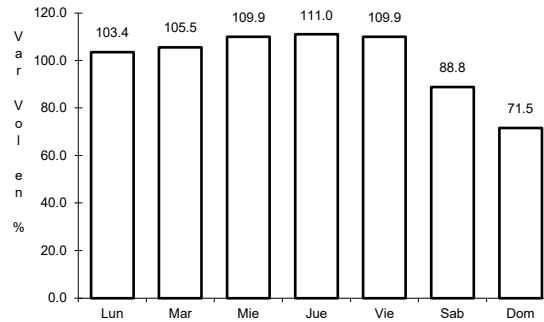
13 CARR: Ramal a Punta Mita

CLAVE: 18020

ruta: MEX-200



Km: 0.00 Tipo: 3 Sent: 0

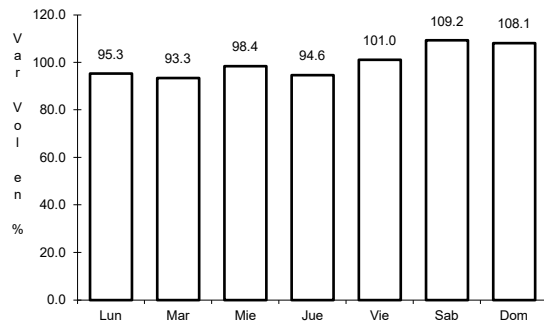


Km: 9.00 Tipo: 3 Sent: 0

14 CARR: Ramal a Santa Cruz

CLAVE: 18030

ruta: MEX-015

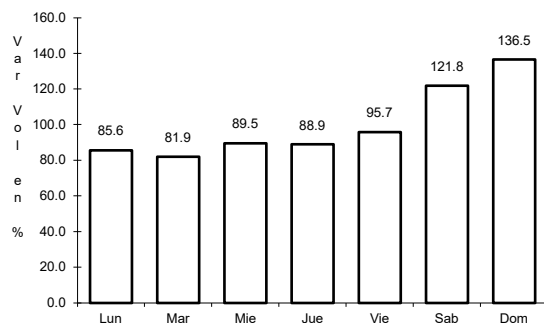


Km: 1.30 Tipo: 1 Sent: 0

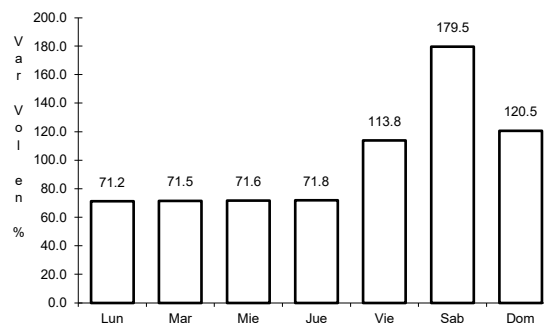
15 CARR: San Blas - Santa Cruz

CLAVE: 18230

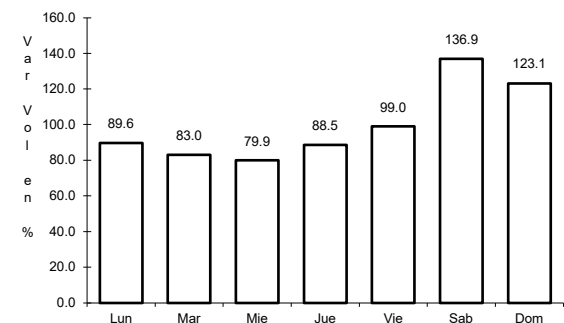
ruta: MEX-015



Km: 0.00 Tipo: 3 Sent: 0



Km: 12.00 Tipo: 1 Sent: 0

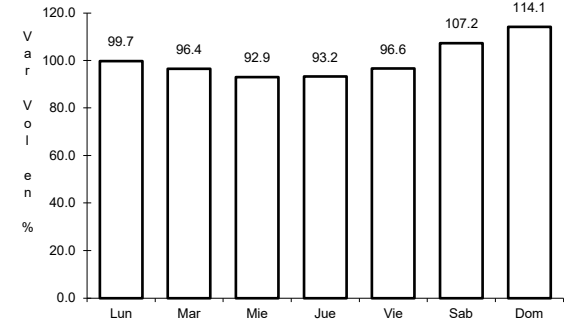
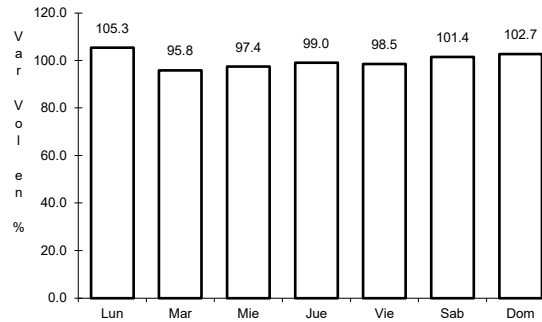
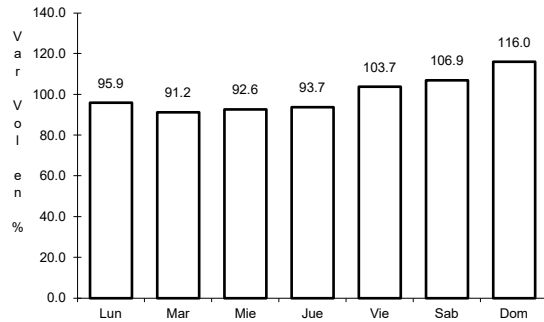


Km: 19.19 Tipo: 1 Sent: 0

16 CARR: Tepic - Ixtapa de La Concepción

CLAVE: 18028

ruta: MEX-015



Km: 0.00 Tipo: 3 Sent: 0

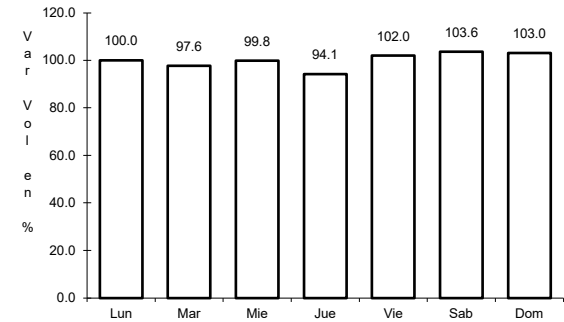
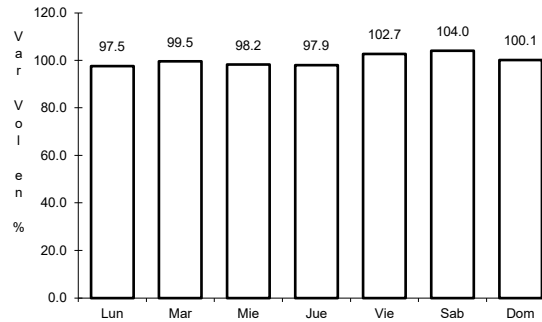
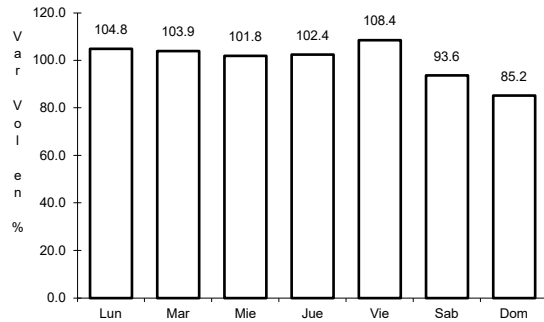
Km: 27.00 Tipo: 1 Sent: 0

Km: 77.42 Tipo: 1 Sent: 0

17 CARR: Tepic - Mazatlán

CLAVE: 00499

ruta: MEX-015



Km: 0.00 Tipo: 3 Sent: 1

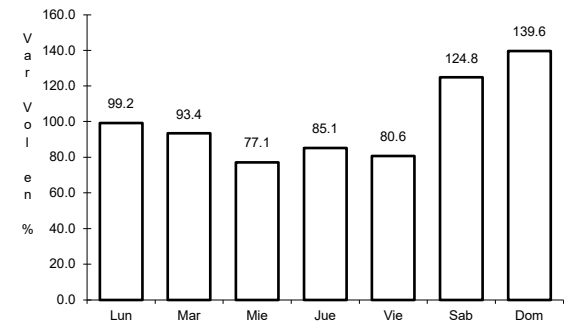
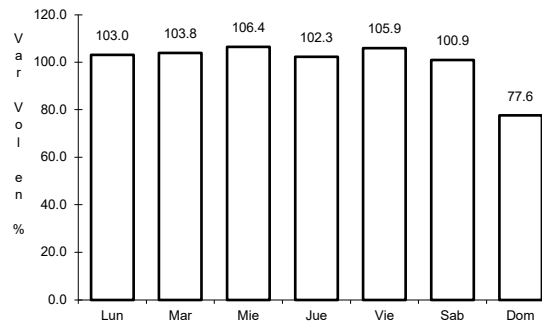
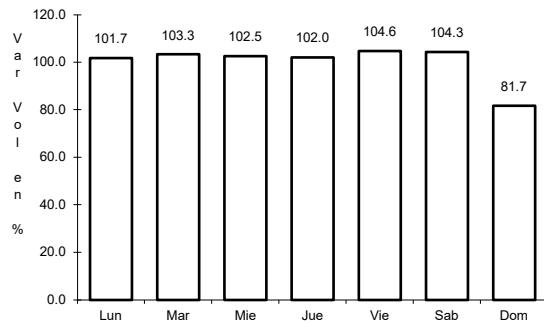
Km: 136.52 Tipo: 1 Sent: 0

Km: 267.99 Tipo: 1 Sent: 0

18 CARR: Tepic - Presa Aguamilpa

CLAVE: 18029

ruta: MEX-015



Km: 0.00 Tipo: 3 Sent: 1

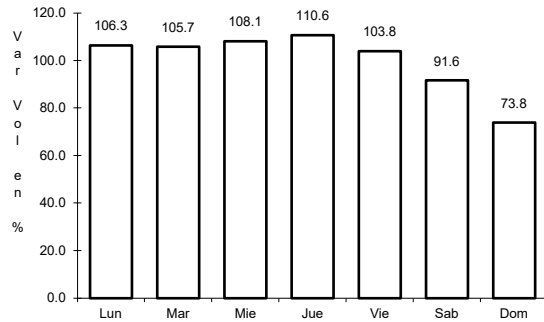
Km: 0.00 Tipo: 3 Sent: 2

Km: 54.00 Tipo: 1 Sent: 0

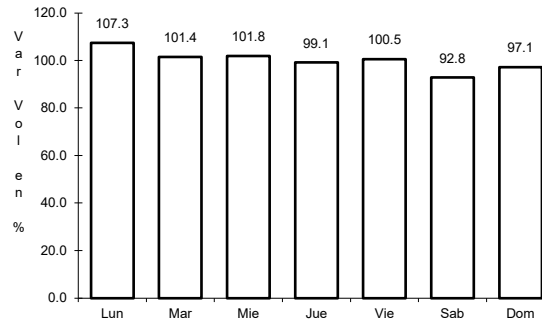
19 CARR: Tepic - Puerto Vallarta

CLAVE: 00068

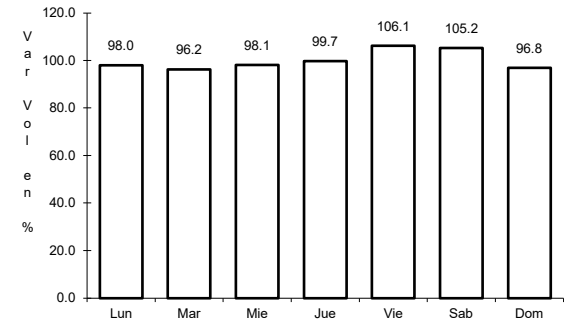
ruta: MEX-200



Km: 0.00 Tipo: 3 Sent: 1



Km: 71.30 Tipo: 1 Sent: 0

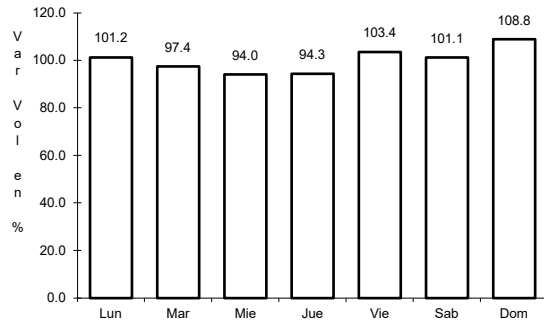


Km: 122.91 Tipo: 3 Sent: 0

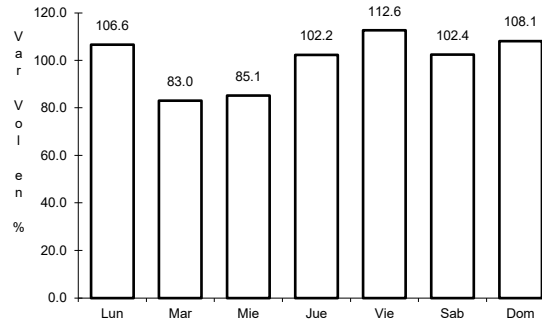
20 CARR: Chapalilla - Compostela (Cuota)

CLAVE: 18004

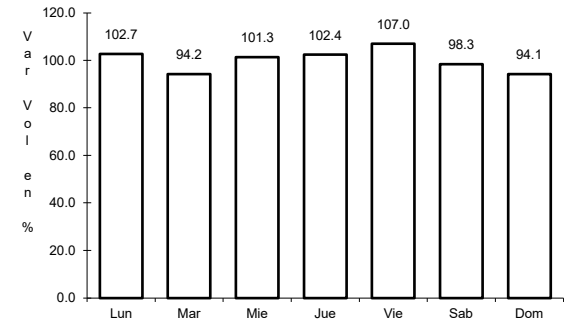
ruta: MEX-068D



Km: 0.00 Tipo: 3 Sent: 0



Km: 33.00 Tipo: 1 Sent: 0

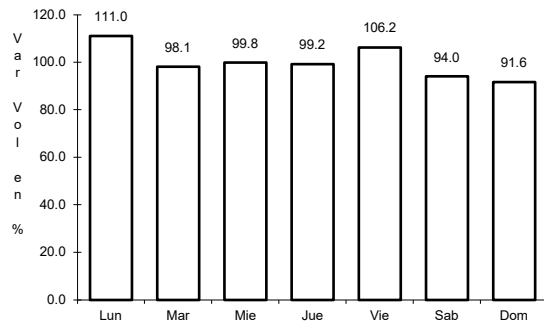


Km: 35.60 Tipo: 1 Sent: 0

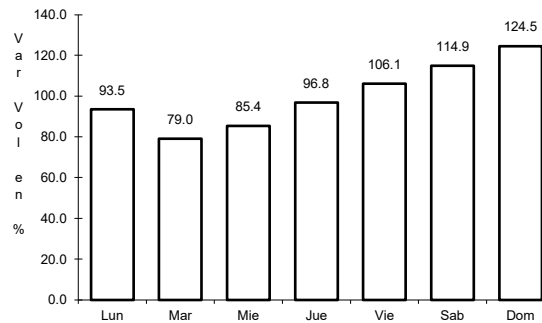
21 CARR: Guadalajara - Tepic (Cuota)

CLAVE: 00033

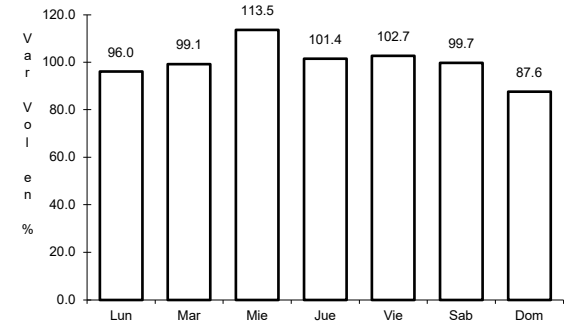
ruta: MEX-015D



Km: 0.00 Tipo: 3 Sent: 1



Km: 0.00 Tipo: 3 Sent: 2

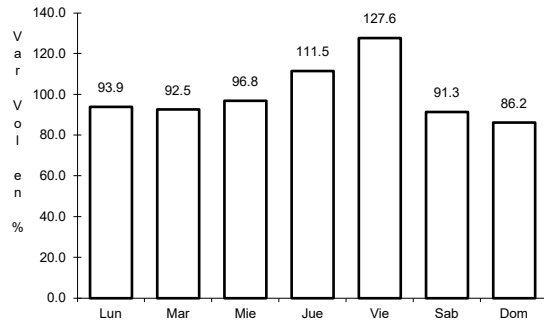


Km: 145.32 Tipo: 3 Sent: 1

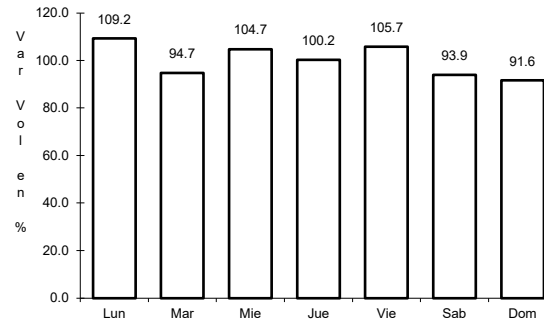
22 CARR: Jala - Las Caleras (Cuota)

CLAVE:

ruta: MEX-070D



Km: 0.00 Tipo: 3 Sent: 1

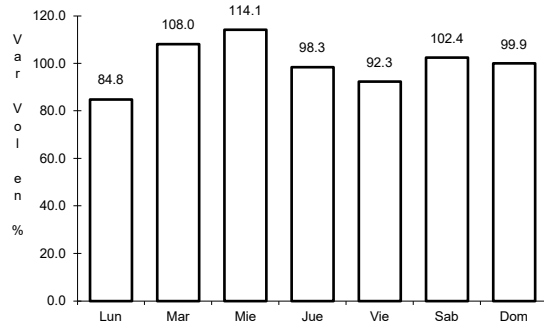


Km: 0.00 Tipo: 3 Sent: 2

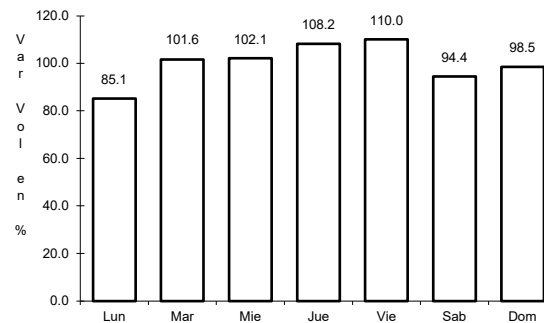
23 CARR: Libramiento de Tepic (Cuota)

CLAVE:

ruta: MEX-015D



Km: 0.70 Tipo: 3 Sent: 0

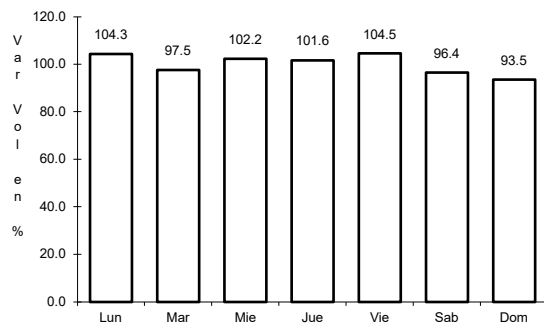


Km: 29.47 Tipo: 1 Sent: 0

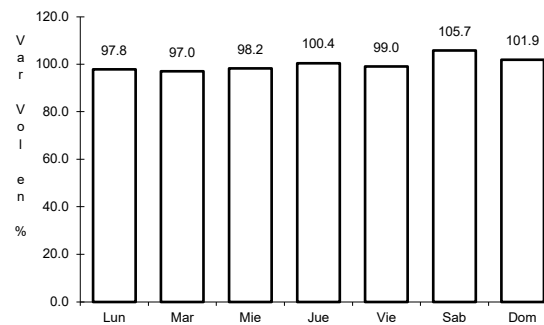
24 CARR: Ramal a Tequepexpan

CLAVE: 00068

ruta: MEX-015D

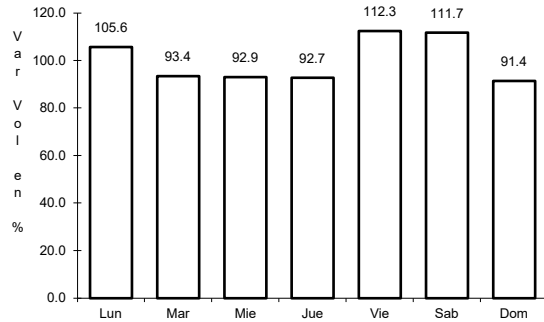


Km: 0.00 Tipo: 3 Sent: 0



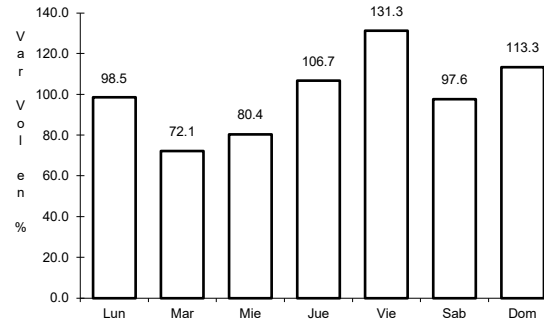
Km: 9.40 Tipo: 1 Sent: 0

25 CARR: Tepic - Puerto Vallarta (Cuota)



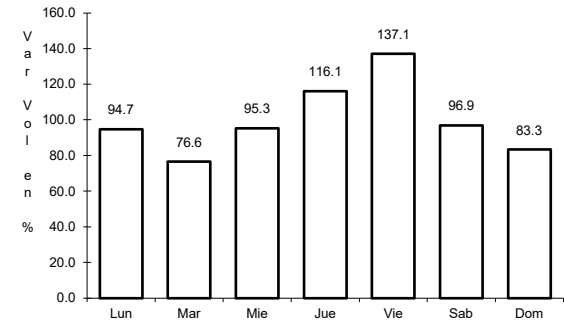
Km: 41.63 Tipo: 3 Sent: 0

CLAVE:



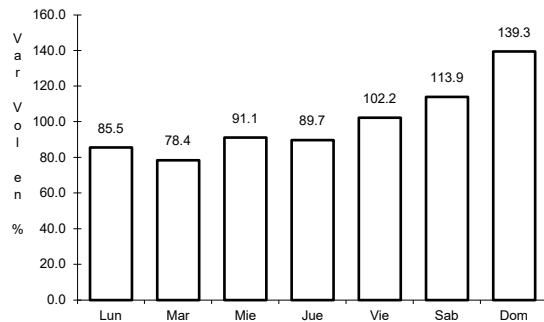
Km: 83.40 Tipo: 3 Sent: 0

ruta: MEX-200D



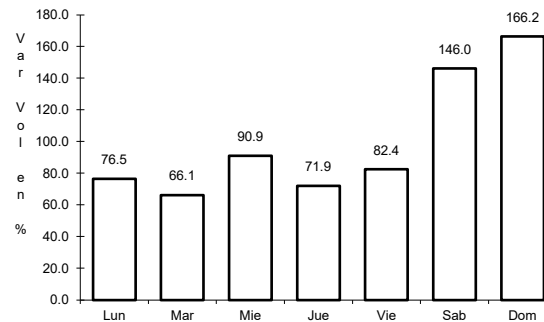
Km: 135.90 Tipo: 3 Sent: 0

26 CARR: Tepic - San Blas (Cuota)



Km: 0.00 Tipo: 3 Sent: 0

CLAVE:



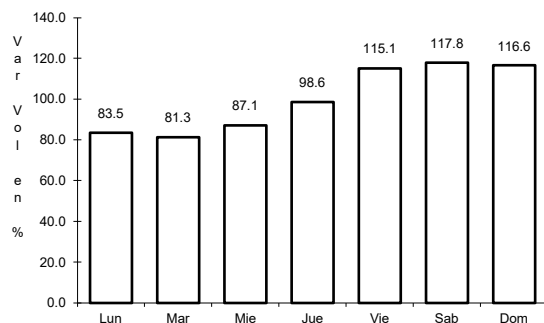
Km: 31.00 Tipo: 1 Sent: 0

ruta: MEX-D



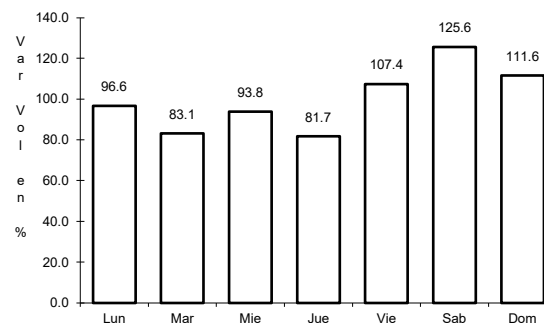
Km: 31.00 Tipo: 1 Sent: 0

27 CARR: Tepic - Villa Unión (cuota)



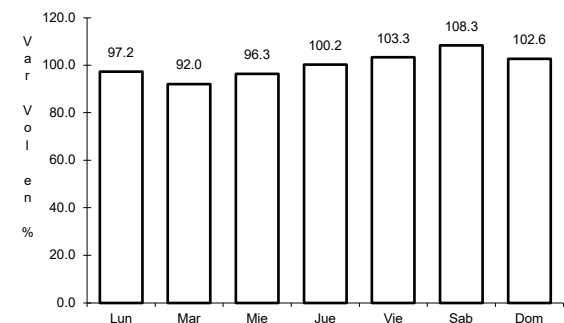
Km: 8.65 Tipo: 1 Sent: 1

CLAVE: 00500



Km: 8.65 Tipo: 1 Sent: 2

ruta: MEX-015D

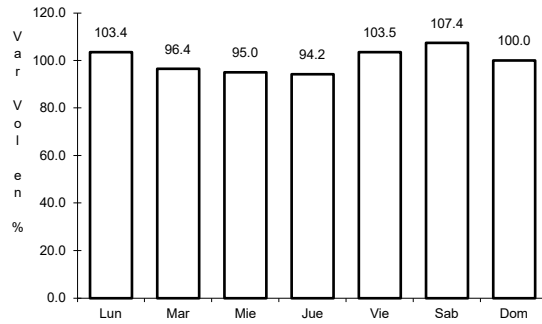


Km: 238.50 Tipo: 1 Sent: 0

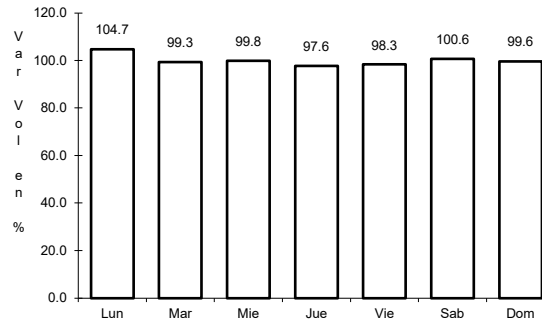
28 CARR: El Carrizo - La Batanga

CLAVE: 18107

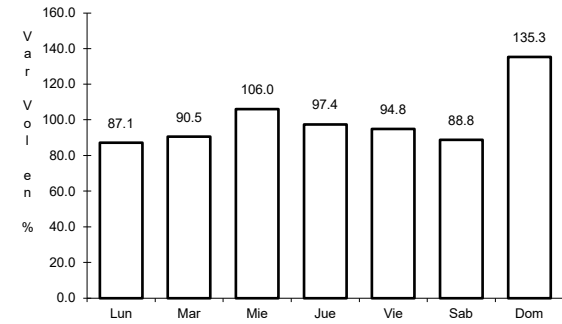
ruta: NAY-078



Km: 0.00 Tipo: 3 Sent: 0



Km: 9.00 Tipo: 1 Sent: 0

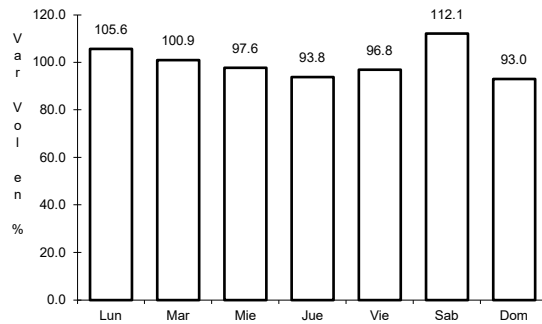


Km: 25.00 Tipo: 1 Sent: 0

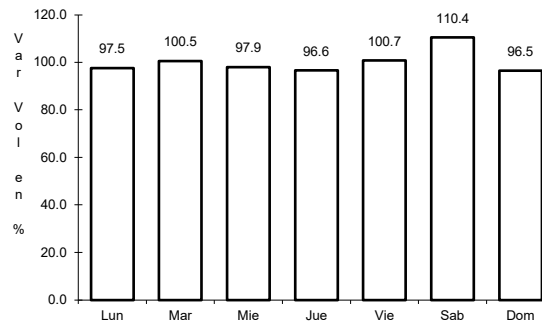
29 CARR: Navarrete - Sauta

CLAVE: 18013

ruta: NAY-013



Km: 0.00 Tipo: 3 Sent: 0

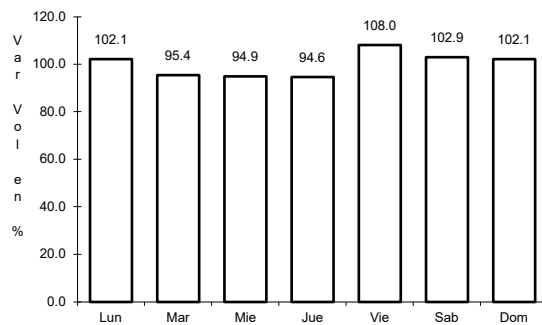


Km: 7.00 Tipo: 1 Sent: 0

30 CARR: Ramal a Amado Nervo

CLAVE: 18011

ruta: NAY

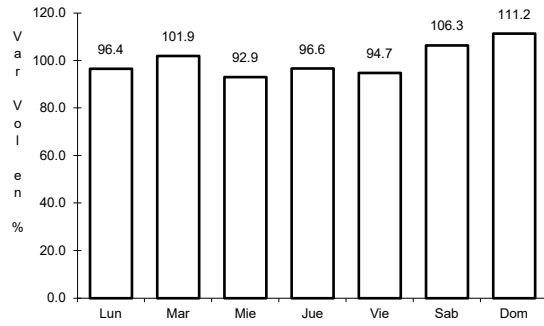


Km: 0.00 Tipo: 3 Sent: 0

31 CARR: Ramal a Bellavista

CLAVE: 18059

ruta: NAY-059



Km: 0.00

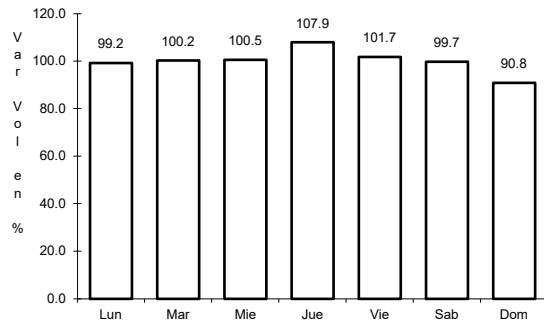
Tipo: 3

Sent: 0

32 CARR: Ramal a El Colomo

CLAVE: 18014

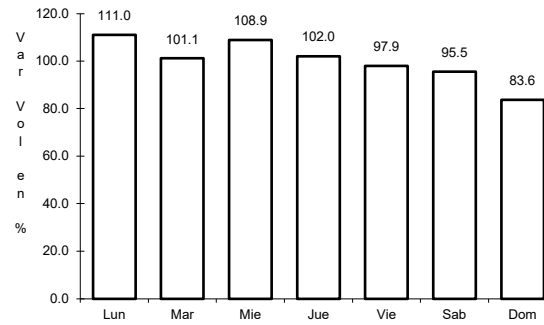
ruta: NAY



Km: 3.00

Tipo: 1

Sent: 1



Km: 3.00

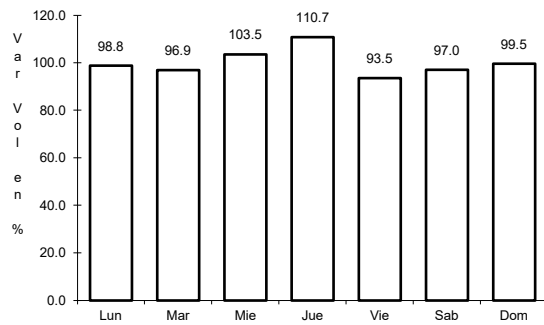
Tipo: 1

Sent: 2

33 CARR: Ramal a Estación Yago

CLAVE: 18224

ruta: NAY



Km: 0.00

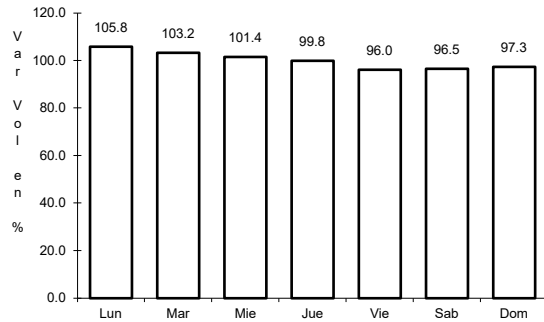
Tipo: 3

Sent: 0

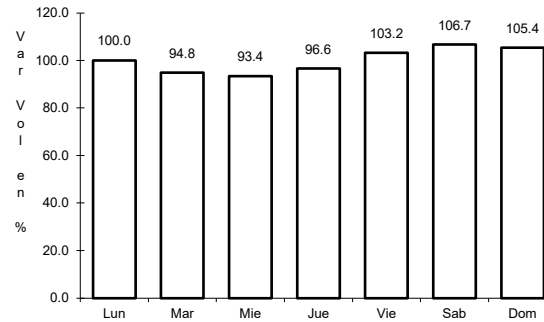
34 CARR: Ramal a Ixtapa de La Concepción

CLAVE: 18233

RUTA: NAY



Km: 0.00 Tipo: 3 Sent: 0

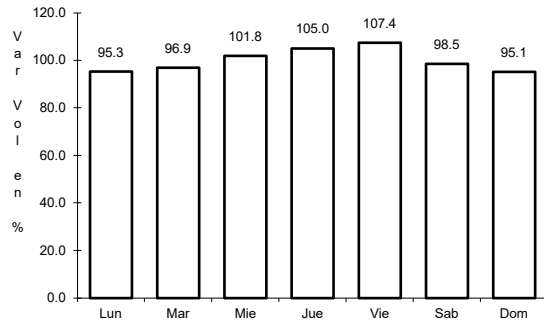


Km: 20.00 Tipo: 1 Sent: 0

35 CARR: Ramal a Milpas Viejas

CLAVE: 18007

RUTA: NAY

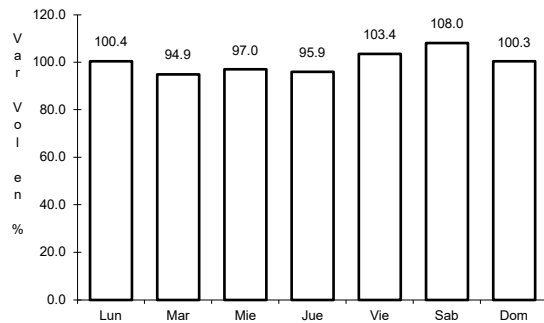


Km: 0.00 Tipo: 3 Sent: 0

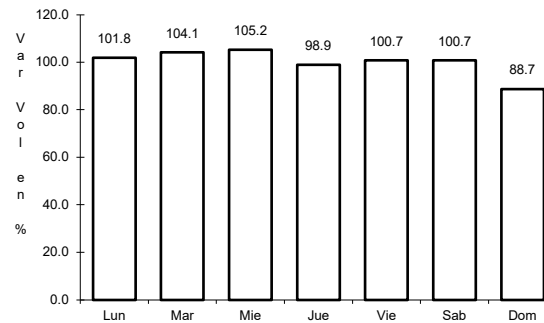
36 CARR: Ramal a Villa Hidalgo

CLAVE: 18031

RUTA: NAY



Km: 0.00 Tipo: 3 Sent: 0

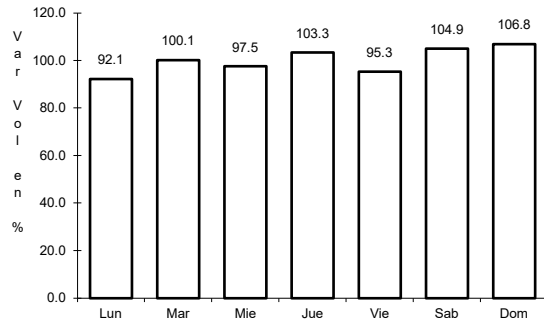


Km: 16.00 Tipo: 1 Sent: 0

37 CARR: Ramal a Volcán del Ceboruco

CLAVE: 18003

RUTA: NAY



Km: 0.00

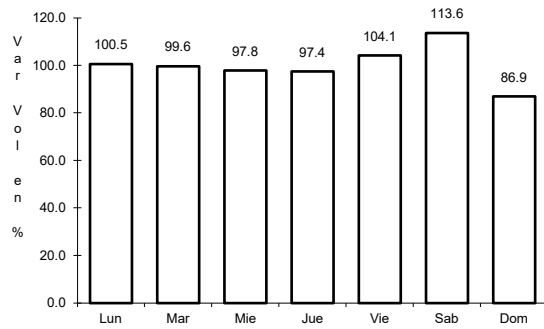
Tipo: 3

Sent: 0

38 CARR: Tepic - Francisco I. Madero

CLAVE: 18009

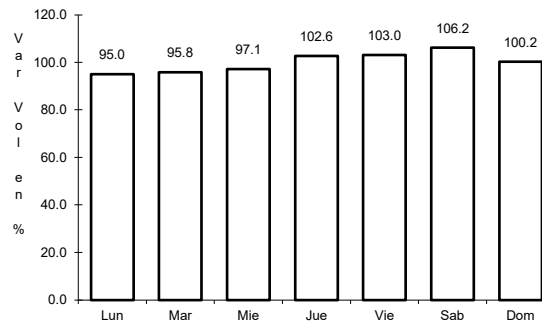
RUTA: NAY-MEX-015



Km: 0.00

Tipo: 3

Sent: 0



Km: 9.00

Tipo: 3

Sent: 0

